

SGSE

Soluciones Globales de Seguridad Electrónica

GALAXY MONITOR PLUGIN

User guide

User guide for the installation of the Galaxy Monitor Plugin
and interaction with the Galaxy Dimension Series panels into Milestone XProtect

Index

1. Introduction	2
2. Architecture.....	3
3. Installation.....	4
4. Configuration.....	6
4.1. Galaxy configuration	6
4.1.1. Ethernet module	6
4.2. Milestone configuration.....	8
4.2.1. Plugin configuration	8
4.2.2. Milestone alarms.....	10
4.2.3. Milestone rules.....	11
4.2.4. Milestone Smart Client.....	12
5. Operations.....	14
6. Troubleshooting	18

1. Introduction

The Galaxy Monitor Plugin communicates commands and events to and from the Galaxy Dimension Series panels.

The Plugin enables the possibility to send commands to the Galaxy panel from the Milestone Smart Client application. And also, it receives events from the Galaxy panel. User is able to configure alarms for these events in the Milestone Management Client.

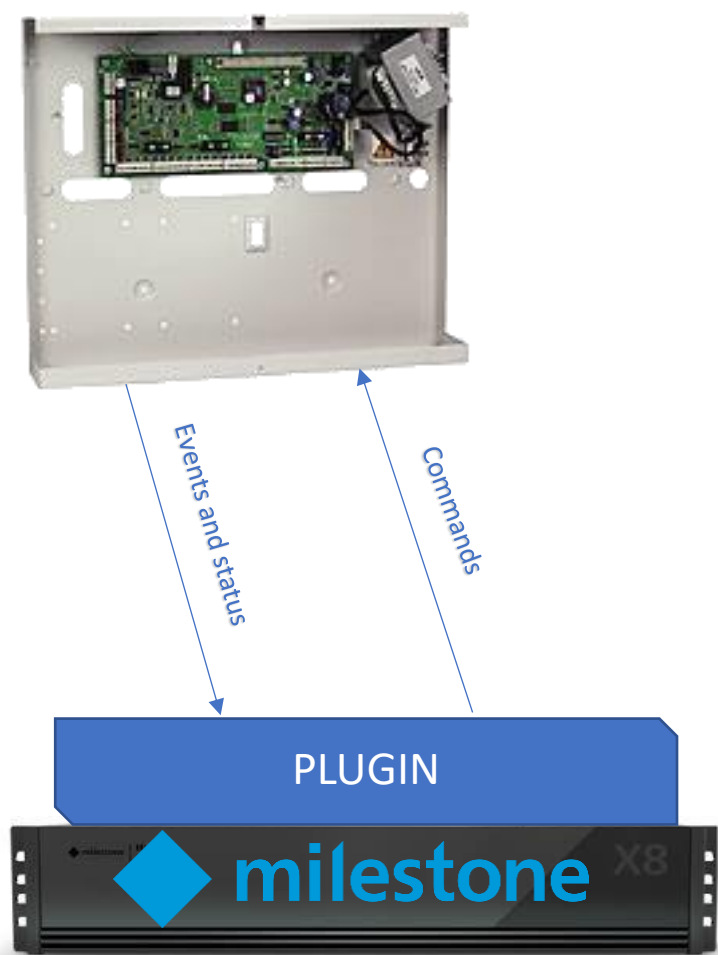
The plugin works with these Galaxy Dimension versions:

- GD-48
- GD-96
- GD-264
- GD-520

For more information, you can click this [link](#).

2. Architecture

The Plugin and the Galaxy panel communicate using the SIA standard protocol. The Plugin is able to send commands to the Galaxy, i.e.: set, unset, etc. And it listens for the Galaxy events, for instance: faults, intrusions, etc. When an event is triggered, the Plugin informs it to Milestone. Then, due the done configuration, Milestone triggers an alarm and also remarks the source item of the event in a map.

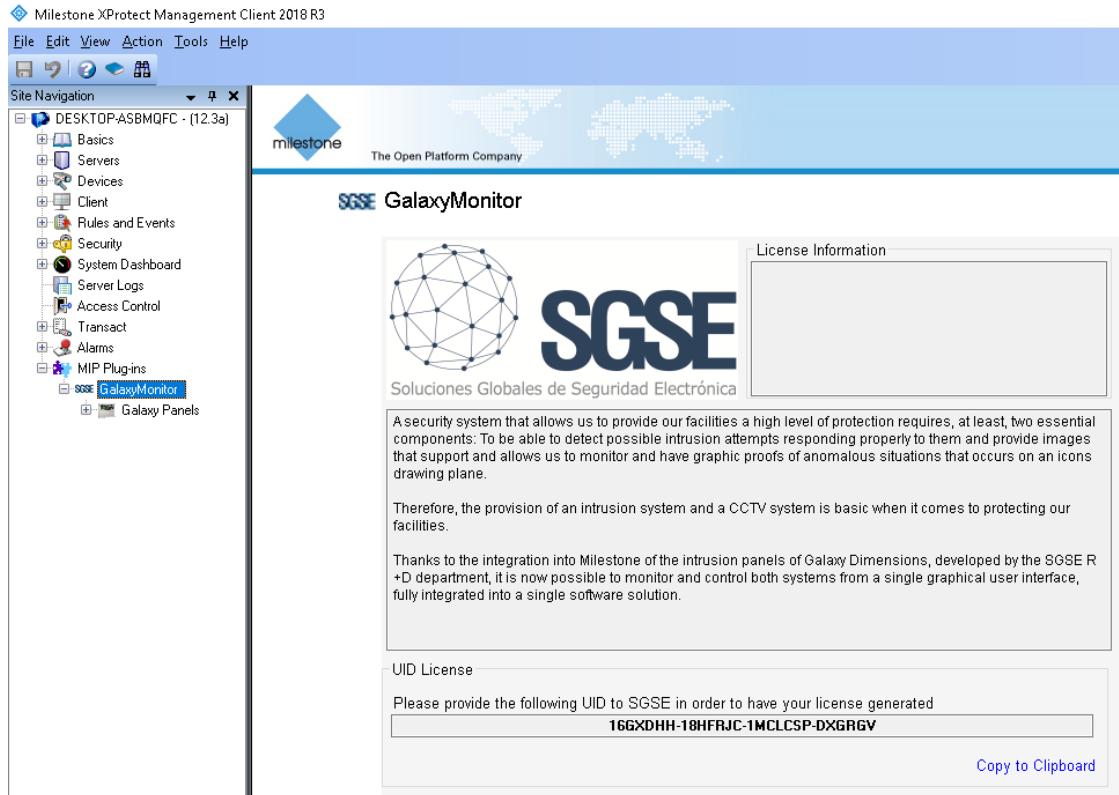


Due to this architecture configuration, the panel has to be equipped with an Ethernet module (E080) in order to communicate with the Plugin.

3. Installation

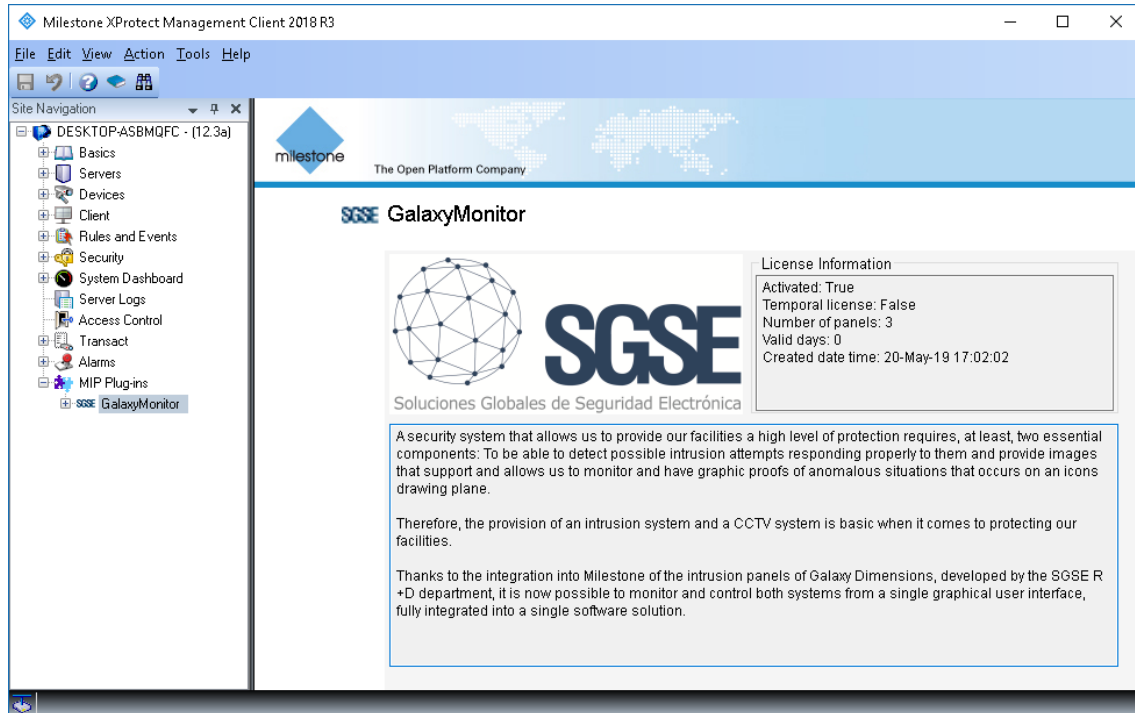
The installation of the Plugin is simple, configurator user has to open the delivered file “*Galaxy Monitor Plugin.ms*” and follow the wizard. The wizard needs administrators rights; therefore, the installation will show the User Account Control window; configurator user has to accept it in order to finish the installation successfully.

When the Milestone Management Client is opened, it will show the UID License:



Configurator user has to provide it to SGSE and we will provide the license.

Once the license is installed, the Plugin will be available:



4. Configuration

Galaxy panel configuration has to match with the Plugin configuration, both configurations share some parameters that must have the same values.

4.1. Galaxy configuration

4.1.1. Ethernet module

There are some mandatory steps to follow in order to configure the Galaxy panel:

4.1.1.1. Enable the engineer mode

Login with the user pin (the default is 12345) and then press the enter key ("ent")

Access to the menu 48, option 1, option 1 (menu 48.1.1) and set it to Enabled (value "1")

Finally press the escape key ("esc") four times until it escapes completely from the menu. And login as engineer immediately: enter the engineer pin (the default is 112233) and then press the enter key.

4.1.1.2. Configure the Galaxy panel IP address

Login as engineer, access the menu 56.4.01.1 and then assign the IP to the Galaxy panel. The menu options 56.4.01.3 and 56.4.01.4 allow you to assign the gateway IP and the network mask.

4.1.1.3. Configure the SIA level

Login as engineer, access the menu 56.4.02.1.1, set the value of the SIA level to "4". After the enter key is pressed, the panel will request to enable or disable all the events available in the SIA protocol. The Plugin is able to process all of them if it is needed.

4.1.1.4. Configure the primary IP for alarm report

This is the listening IP where the Plugin receives and process the events.

Login as engineer, access the menu 56.4.02.2.1, set the value to the IP of the Milestone Event Server. The option 56.4.02.2.2 allows to change the port number if needed. If it is changed, the same value has to be configured in the Milestone Management Client.

4.1.1.5. Account number

Login as engineer, access the menu 56.4.02.4 and assign an account number

4.1.1.6. Enable TCP

Login as engineer, access the menu 56.4.02.8 and set the value to "1=TCP".

4.1.1.7. Enable the SIA control

This enables the Plugin to send commands to the Galaxy.

Login as engineer, access the menu 56.4.08 and set the value to the IP of the Milestone Event Server, the port is 10005.

4.1.1.8. Encryption

Login as engineer, access the menu 56.4.09 and set all values to "0=OFF"

4.1.1.9. Exit engineer mode

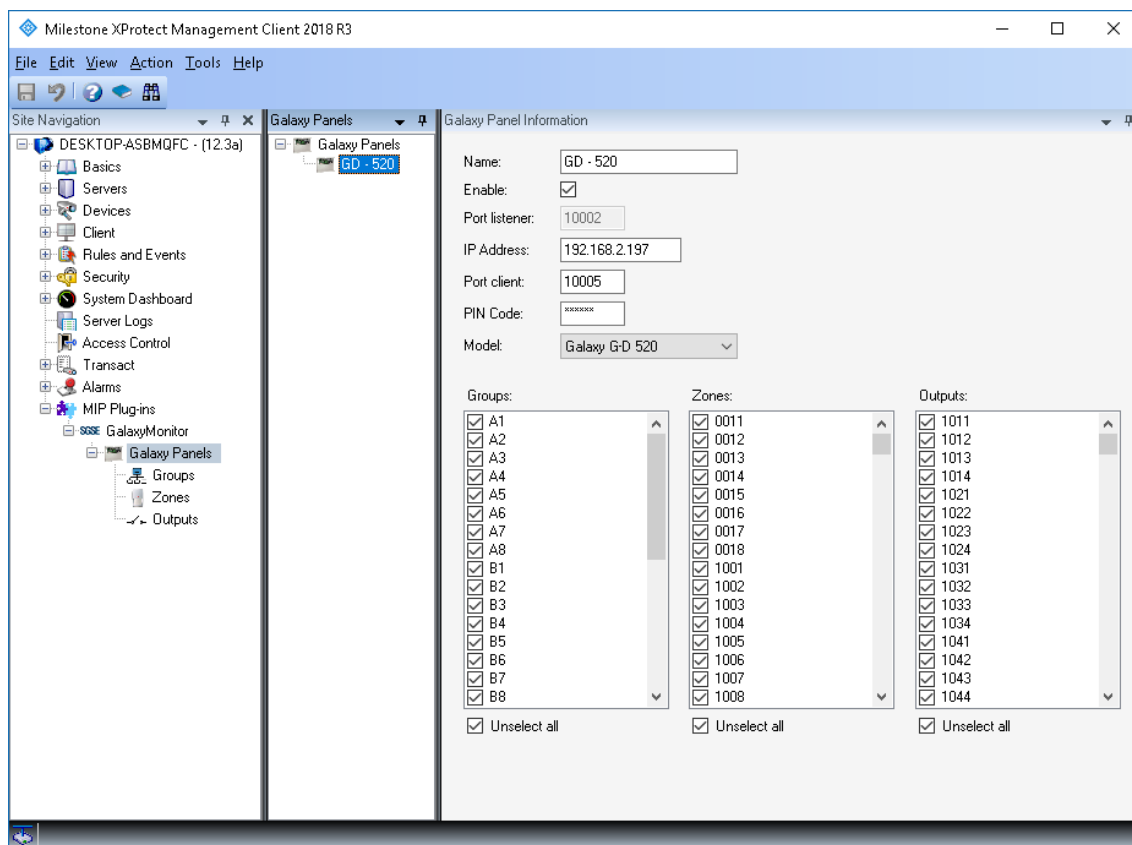
After all configuration is done, configurator user has to exit the engineer mode. Press “esc” until keypad shows the model and then enter the engineer pin and press the “esc” key instead of the “ent” key. It is recommended to do a full restart (unplug power and battery).

4.2. Milestone configuration

4.2.1. Plugin configuration

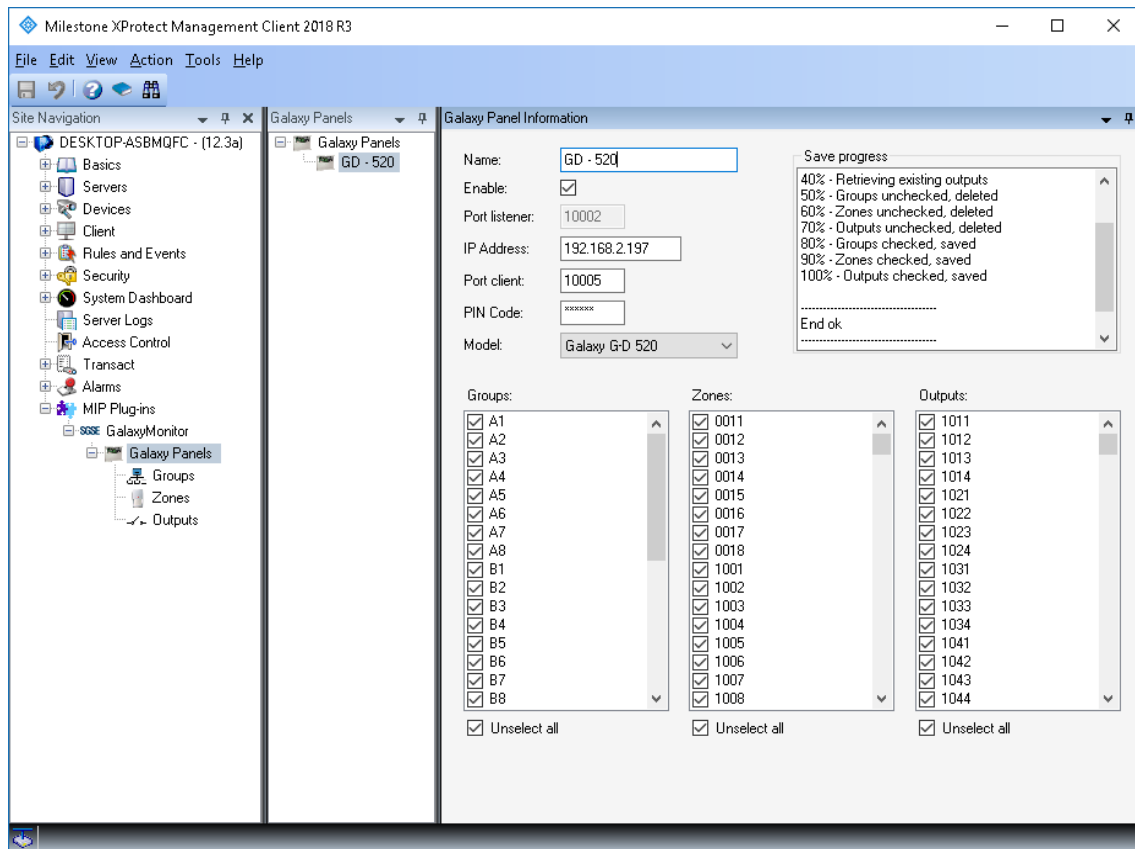
If the plugin and the license were successfully installed, configurator user should be able to create a Galaxy item. Configurator user has to configure:

- Name of the Galaxy panel
- Listening port; see step “Configure the primary IP for alarm report” in the “[Ethernet module](#)” section.
- IP address assigned to the Galaxy panel; see step “Configure the Galaxy panel IP address” in the “[Ethernet module](#)” section.
- Client port; see step “Enable the SIA control” in the “[Ethernet module](#)” section.
- PIN code. This pin is not the user pin neither the engineer pin, this is for the protocol communication. We recommend to leave it as is.
- Finally, configurator user has to choose the model of the Galaxy panel. We recommend to match exactly with the physical Galaxy panel model. After choose it, the system will load the groups zones and outputs as it shows in the image:



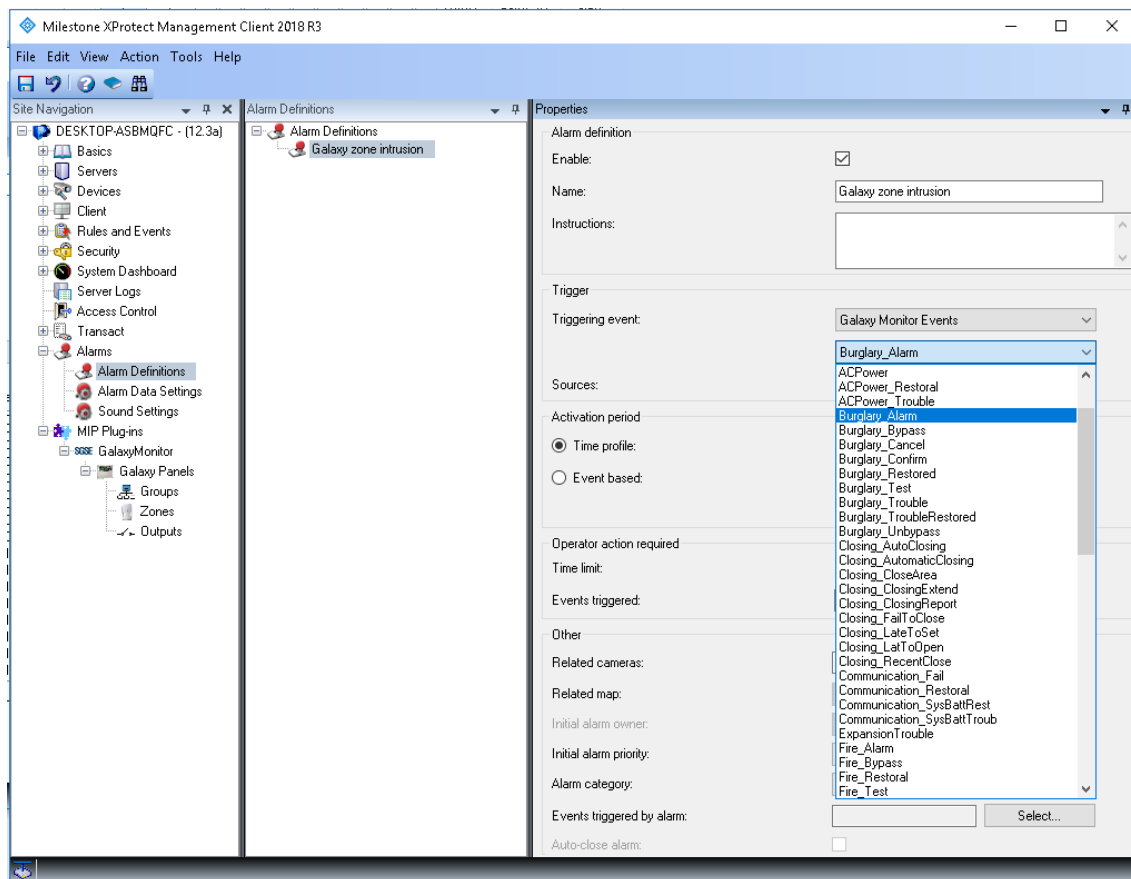
Configurator user can select the items (group, zones and outputs) that he needs.

After configurator user clicks the save button, the Plugin will create all elements related to the panel itself, the groups, zones and outputs selected. This process may take several minutes, depending on the quantity of selected items. Finally, it will show a process end message:



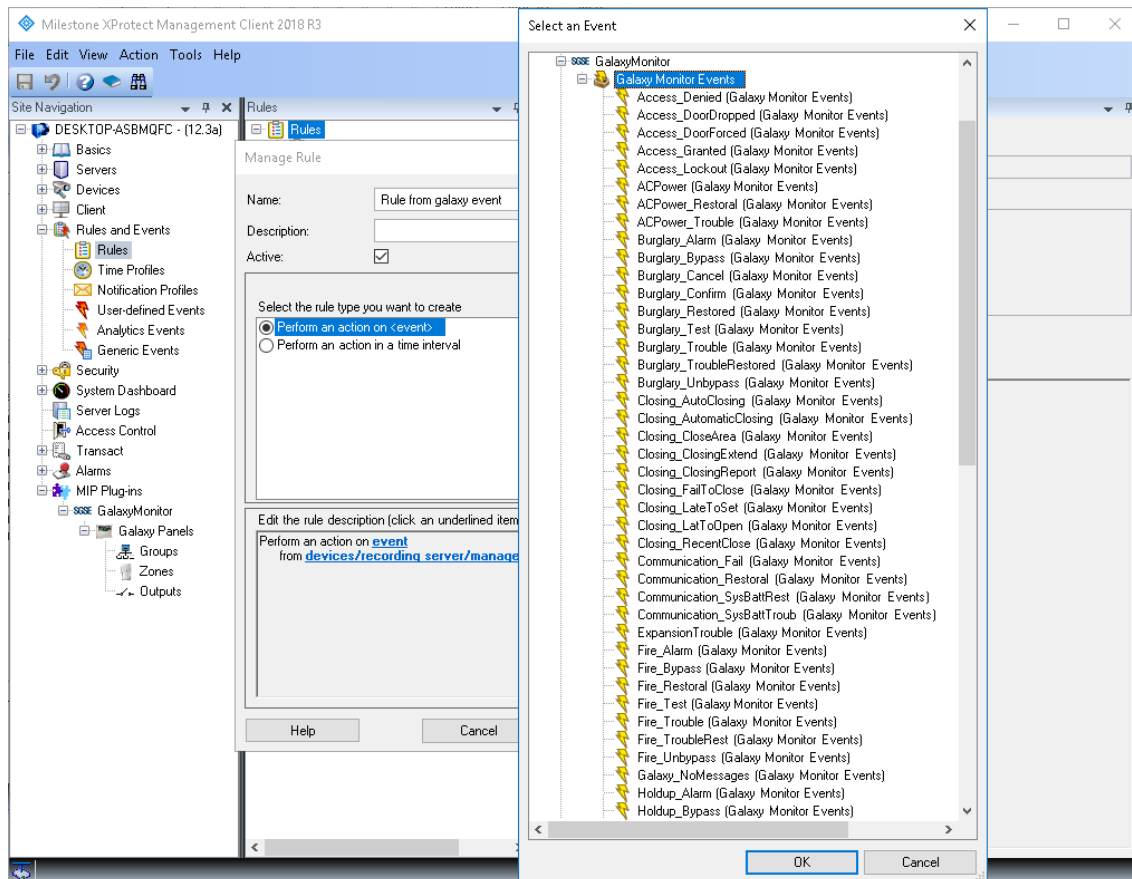
4.2.2. Milestone alarms

After installation, configurator user will see a new set of events in Milestone. It is a list of all events that can be triggered from the Galaxy panel through the SIA communication protocol. Due this flexibility, configurator user can configure an alarm for each event he wants to have an alarm.



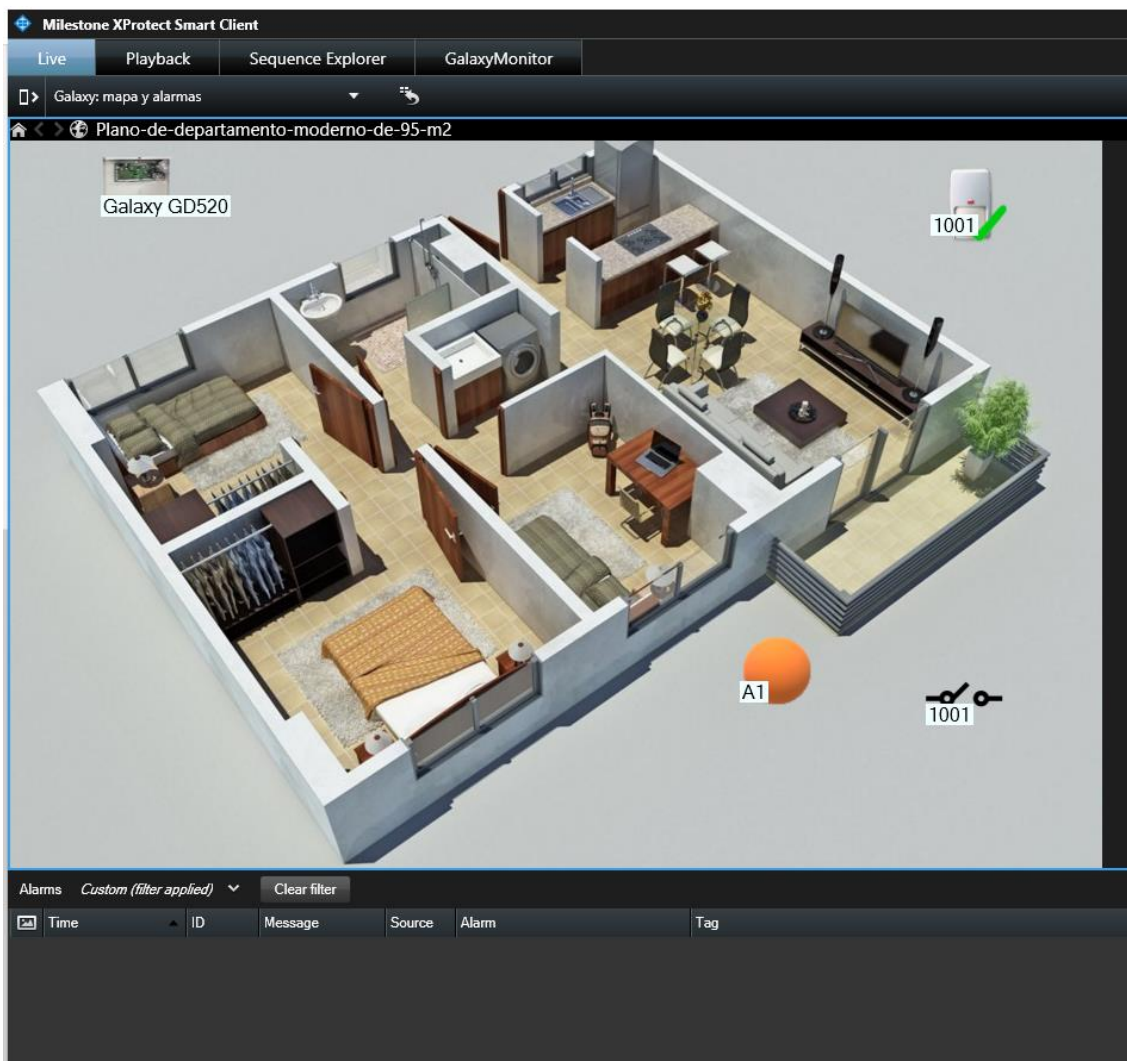
4.2.3. Milestone rules

Also, configurator user can use these events to trigger specific rules:

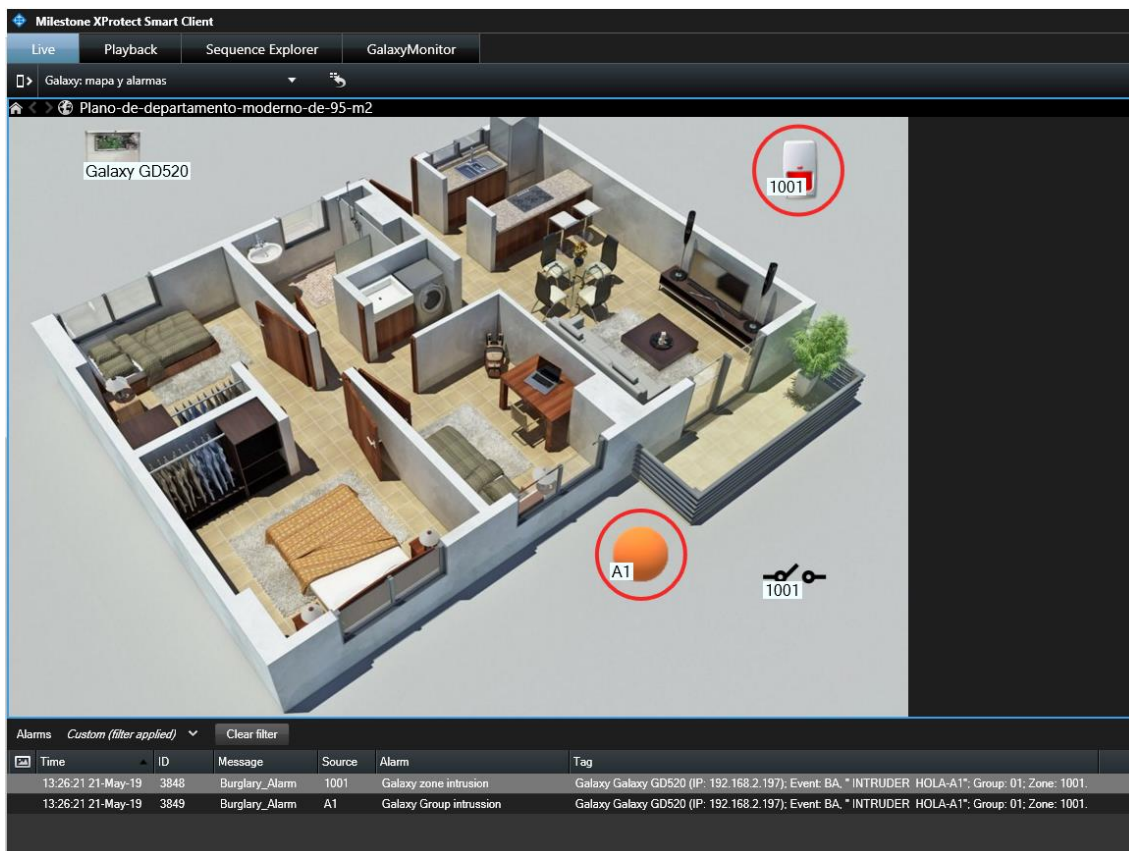


4.2.4. Milestone Smart Client

If items were created correctly, configurator user will be able to drag and drop the items (panel, groups, zones and outputs) in a map in the Milestone Smart Client:



If an alarm is triggered, operator user will see that the source item of the alarm is marked with a blinky red circle:



The screenshot shows the Milestone XProtect Smart Client interface. The top menu bar includes 'Live', 'Playback', 'Sequence Explorer', and 'GalaxyMonitor'. Below the menu, the breadcrumb trail reads 'Galaxy: mapa y alarmas' and 'Plano-de-departamento-moderno-de-95-m2'. The main view displays a 3D isometric floor plan of a modern apartment. Two red circles highlight alarm sources: one on a white sensor labeled '1001' in the living area, and another on an orange sensor labeled 'A1' near the entrance. A key icon labeled '1001' is also visible. At the bottom, an 'Alarms' table lists recent events.

Time	ID	Message	Source	Alarm	Tag
13:26:21 21-May-19	3848	Burglary_Alarm	1001	Galaxy zone intrusion	Galaxy Galaxy GD520 (IP: 192.168.2.197); Event: BA, * INTRUDER HOLA-A1*; Group: 01; Zone: 1001.
13:26:21 21-May-19	3849	Burglary_Alarm	A1	Galaxy Group intrusion	Galaxy Galaxy GD520 (IP: 192.168.2.197); Event: BA, * INTRUDER HOLA-A1*; Group: 01; Zone: 1001.

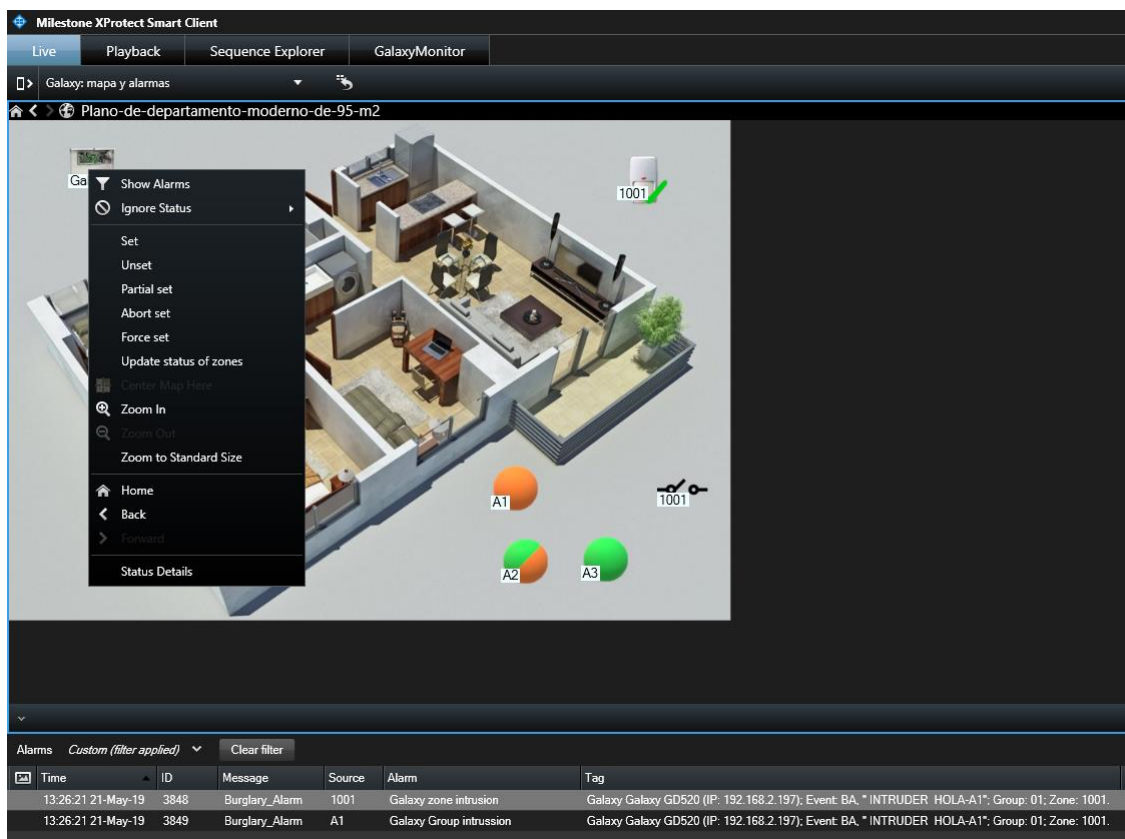
5. Operations

Operator user can send commands to:

- The panel itself
- Groups
- Zones
- Outputs

In the map with the icons, operator has to right click over the icon and the system will show the available commands for the selected item.

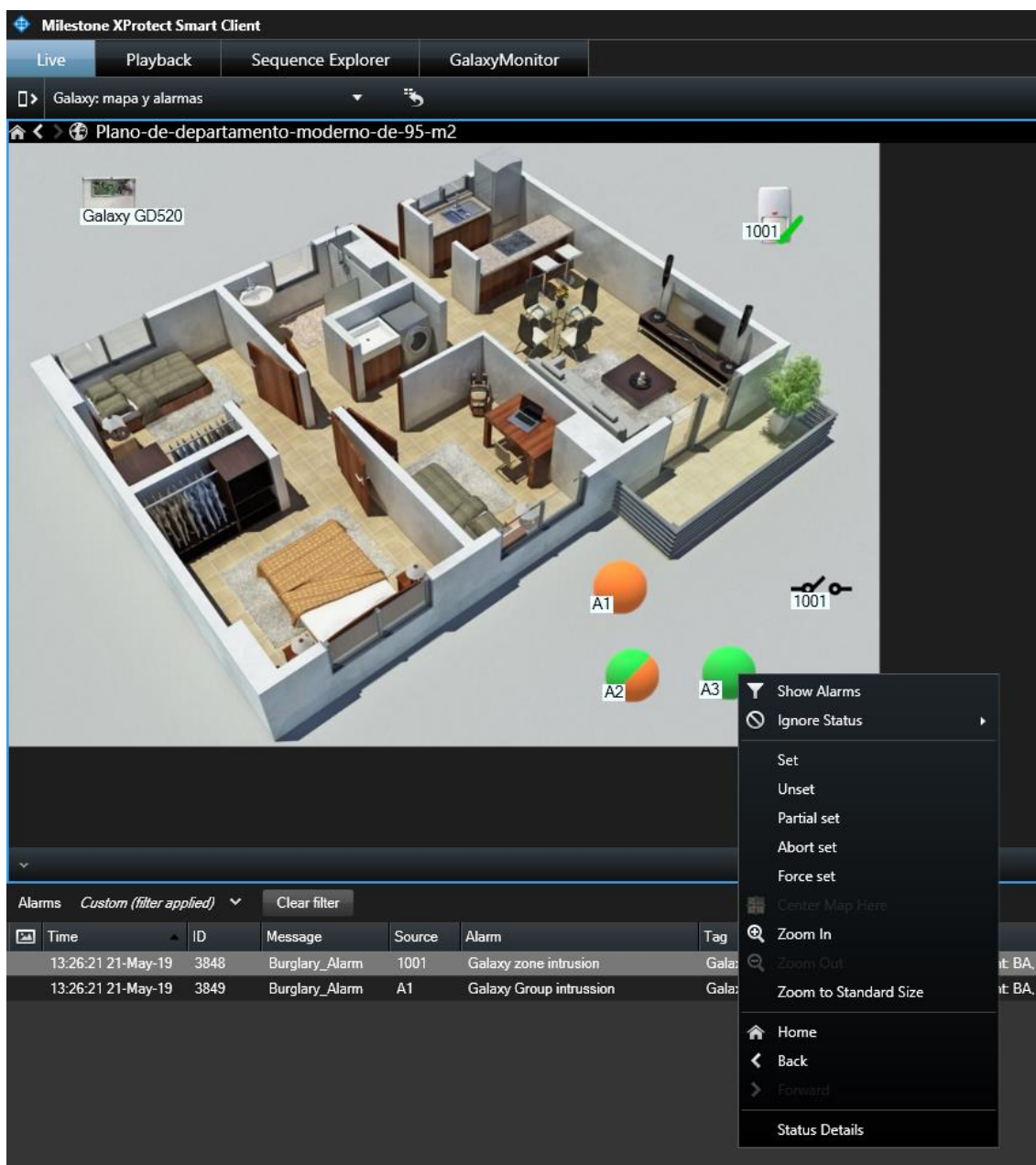
- The panel itself has the follows commands:
 - Set
 - Unset
 - Partial set
 - Abort set
 - Force set



b) Group:

Each group has the following commands:

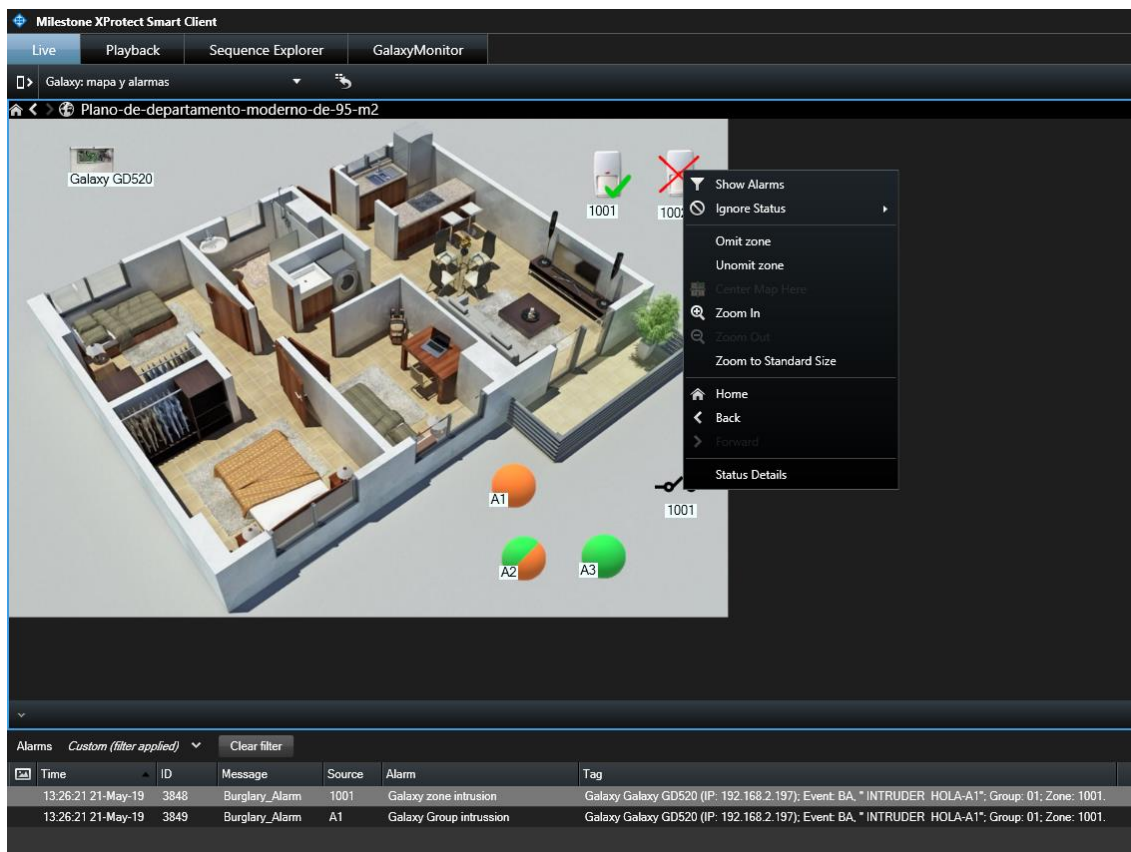
- Set
- Unset
- Partial set
- Abort set
- Force set



c) Zone:

Each zone has the following commands:

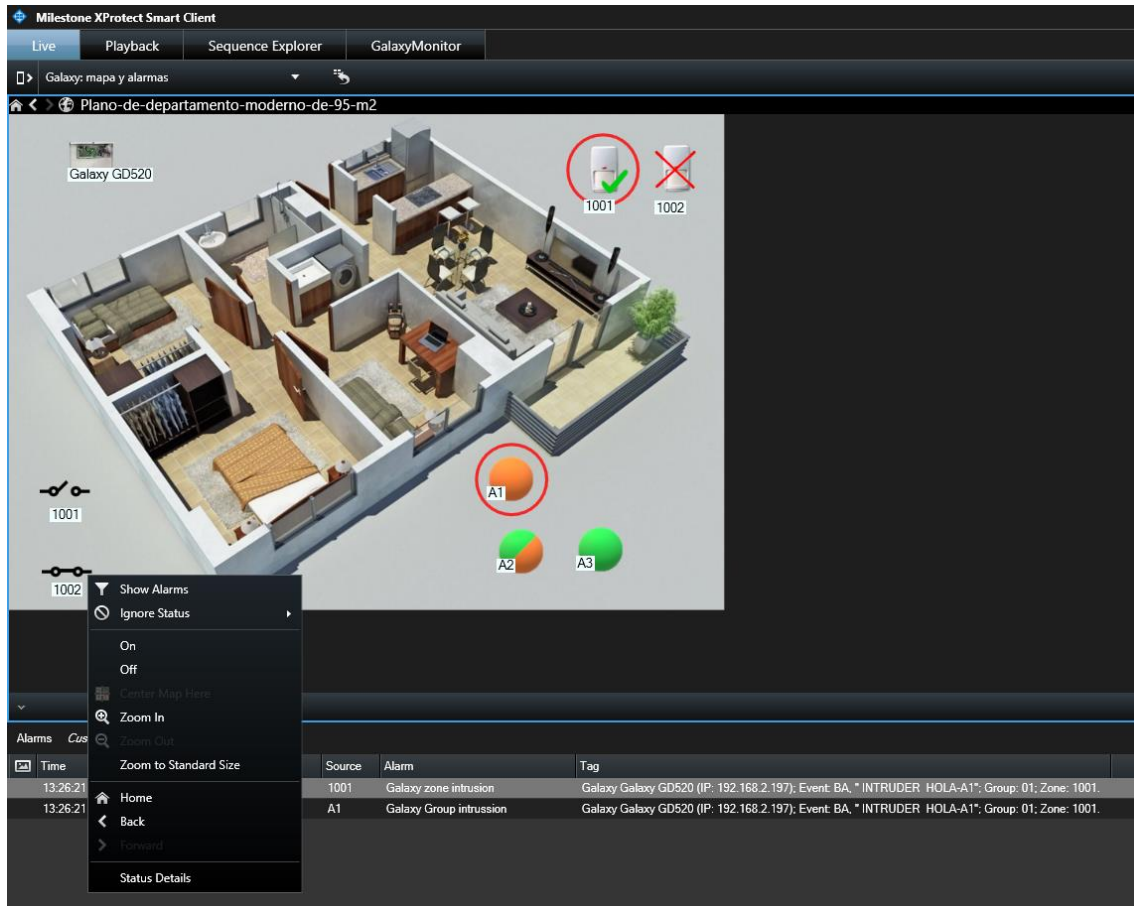
- Omit
- Unomit



d) Outputs:

Each output has the following commands:

- On
- Off



Every certain configured time period and if there are no events, the process running in the event server sends an event informing that there are no messages. This confirms that the process is running normally and there is no connection problems.

6. Troubleshooting

- The Galaxy doesn't receive commands or it doesn't send events
Check the network configuration.
To confirm that the problem could be the network, connect the Galaxy directly to the PC where the Milestone Event Server is running (the cables of the UTP-5 cable have to be crossed).
- Map in Milestone Smart Client shows crosses instead of the right icon
Delete the icon and add it again. This happens when an item in the Milestone Management Client is deleted and created again.
- There are no alarms
Check in the Milestone Management Client that the alarm is related to the right event.
- There are no events neither alarms
Check that configurator user exited correctly from the engineer mode. Configurator user can also reset from the keypad (menu 51.17.1.1) or can for the reset unplugging power and battery.
Restart the Milestone Event Server and check the network.