



SGSE

Soluciones Globales de Seguridad Electrónica

SGSE COMPATIBILITY TEST

Product: GrandStream IP PBX Plugin
 Software Platform: Milestone XProtect
 Date: 12/10/2024

Tested software versions

GrandStream IP PBX Plugin	1.24.0223
Dashboard	1.24.0506
XProtect Professional +	2024 R2



Performance test

GrandStream IP PBX Plugin	
Plugin loaded	Supported
Switchboard conection	Supported
Event loaded in alarm setup	Supported
Event loaded in rules	Supported
Commands loaded in rules	Supported
Setup plugin item in maps	Supported
Change extension status in maps	Supported
Call from maps	Supported
Command form maps	Supported
Trigger recorded message from map	Supported
Trigger real time message from map	Supported
Pre-recorded and real time tab loaded	Supported
Trigger recorded message from tab	Supported
Trigger real time message from tab	Supported
Central IP PBX tab loaded	Supported
Call from tab	Supported
Change extension status in tab	Supported
Alarm reception	Supported
Rule execution	Supported
Incoming intercoming call event	Supported
Dashboard	
Dashboard interface loaded	Supported
PDF and Excel report generation	Supported
Time filters	Supported

Milestone XProtect Smart Client

Nueva vista (1 + 1... | Exportaciones | Buscar | Gestor de alar... | Mensajes pregrab... | Central IP PBX | SGSE Intrusion Da... | No seguro | 17:28:07 | Ajustes

Mensajes pregrabados

PBX [1]

Mensaje_Evacuación [10]

- 1000 (Ext. 1000)
- 1001 (Ext. 1001)
- 1002 (Ext. 1002)
- 1003 (Ext. 1003)
- KF-2000 (Ext. 1004)
- HDP-1261PT (Ext. 1005)
- KF-1900 (Ext. 1006)
- GDS3710-22 (Ext. 1007)
- 1009 (Ext. 1009)
- Intercom CCAA (Ext. 1010)

Alarma [1]

- 1002 (Ext. 1002)

PBX [1]

Mensaje_Directo [10]

- 1000 (Ext. 1000)
- 1001 (Ext. 1001)
- 1002 (Ext. 1002)
- 1003 (Ext. 1003)
- KF-2000 (Ext. 1004)
- HDP-1261PT (Ext. 1005)
- KF-1900 (Ext. 1006)
- GDS3710-22 (Ext. 1007)
- 1009 (Ext. 1009)
- Intercom CCAA (Ext. 1010)

Milestone XProtect Smart Client

Nueva vista (1 + 1... | Exportaciones | Buscar | Gestor de alar... | Mensajes pregrab... | Central IP PBX | SGSE Intrusion Da... | No seguro | 17:28:47 | Ajustes

Estado de dispositivos SIP

Áreas y dispositivos SIP

- Áreas [3]
 - Interior [0]
 - Exterior [3]
 - 1002 (Ext. 1002)
 - 1003 (Ext. 1003)
 - GDS3710-22 (Ext. 1007)
 - Área sin asignar [0]

Área de localización

Dispositivos SIP por tipo de extensión

Área	Dispositivos SIP
Interior [0]	
Exterior [3]	1003 (Ext. 1003), GDS3710-22 (Ext. 1007), 1002 (Ext. 1002)
Área sin asignar [0]	

Milestone XProtect Smart Client

Nueva vista (1 + 1... | Exportaciones | Buscar | Gestor de alar... | Mensajes pregrab... | Central IP PBX | SGSE Intrusion Da... | No seguro | 17:29:25 | Ajustes

Llamadas - Graficas

Últimos 30 días | Este mes | Últimos 7 días | Esta semana | Ayer | Últimas 24 horas | Hoy | Seleccionable.

Cantidad de llamadas por día

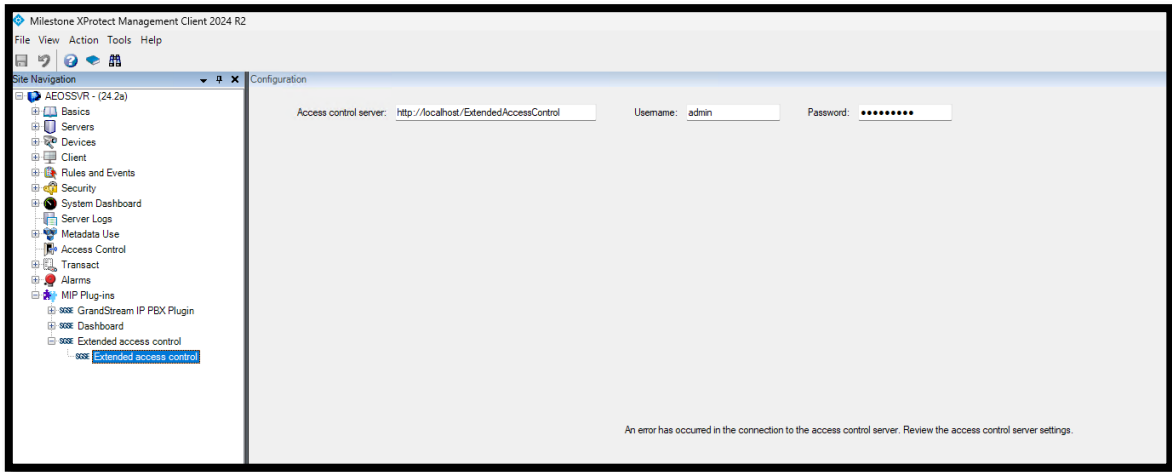
■ Llamadas atendidas ■ Llamadas atendidas por contestador ■ Llamadas no atendidas

Duración de llamadas por día


■ Duración de la llamada ■ Tiempo en atender

Numero de llamadas

Período	Llamadas atendidas	Porcentaje	Llamadas no atendidas	Porcentaje
Hoy	3	75.00%	1	25.00%
Ultimos 30 días	35	83.33%	7	16.67%
Ultimos 7 días	3	75.00%	1	25.00%



Would like to know more?



Dashboard Intrusion & VoIP

We are pleased to announce the integration of our innovative Management Dashboard with the intrusion and VoIP plugins developed by SGSE. This Dashboard has been designed to enhance...



Integration of the Grandstream IP-PBX devices in Milestone

One way to optimise the work of security personnel, making their tasks simpler, faster and more effective, is by centralising all...



Dashboard intrusion and VoIP manual