

SGSE COMPATIBILITY TEST

Product: GrandStream IP PBX Plugin
 Software Platform: Milestone XProtect
 Date: 23/01/2025

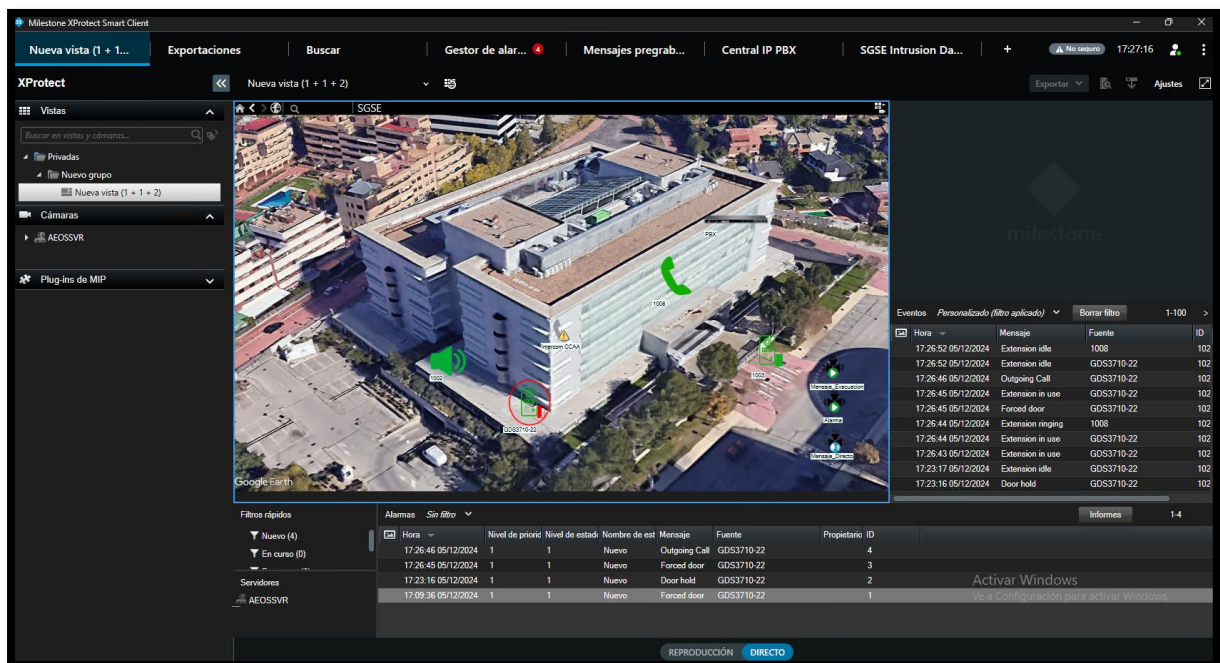
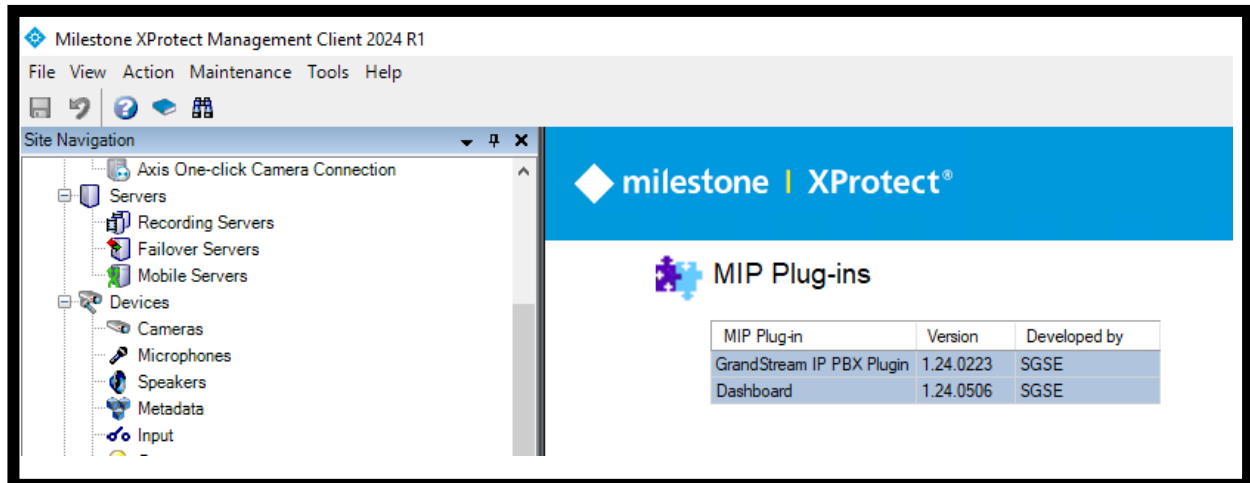
Tested software versions

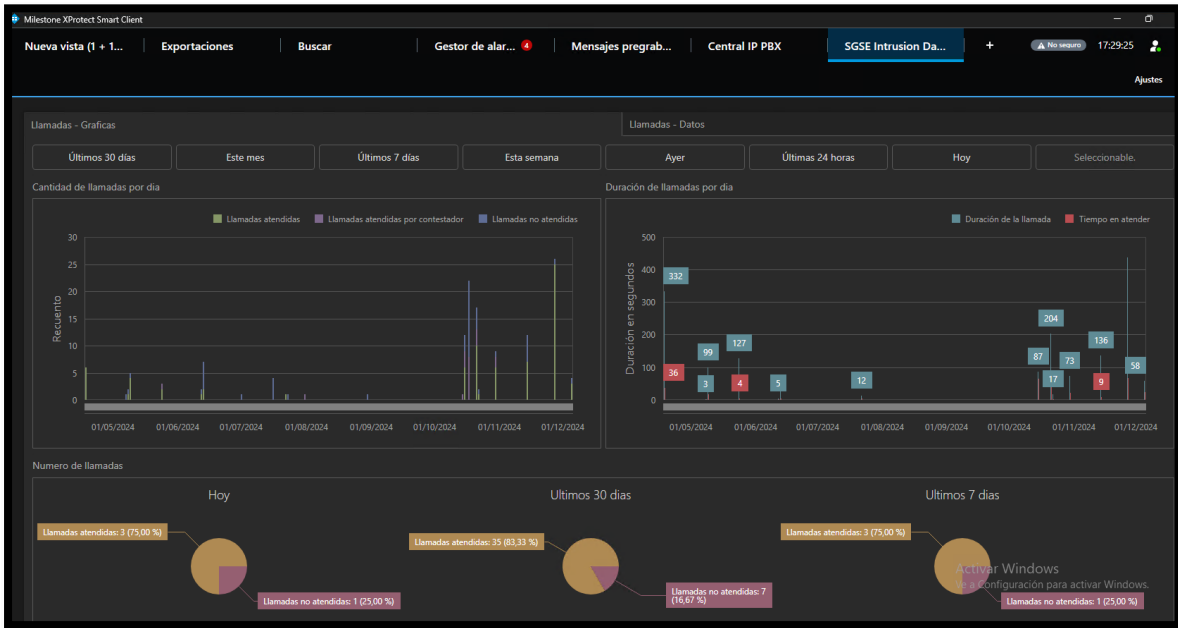
GrandStream IP PBX Plugin	1.24.0223
Dashboard	1.24.0506
XProtect Corporate	2024 R1

Performance test

GrandStream IP PBX Plugin	
Plugin loaded	Supported
Switchboard conection	Supported
Event loaded in alarm setup	Supported
Event loaded in rules	Supported
Commands loaded in rules	Supported
Setup plugin item in maps	Supported
Change extension status in maps	Supported
Call from maps	Supported
Command form maps	Supported
Trigger recorded message from map	Supported
Trigger real time message from map	Supported
Pre-recorded and real time tab loaded	Supported
Trigger recorded message from tab	Supported
Trigger real time message from tab	Supported
Central IP PBX tab loaded	Supported
Call from tab	Supported
Change extension status in tab	Supported
Alarm reception	Supported
Rule execution	Supported
Incoming intercoming call event	Supported
Dashboard	
Dashboard interface loaded	Supported
PDF and Excel report generation	Supported
Time filters	Supported

Images





Would like to know more?

<https://sgse.eu/integration-of-the-grandstream-ip-pbx-devices-in-milestone/>

<https://sgse.eu/dashboard-intrusion-and-voip/>

<https://sgse.eu/wp-content/uploads/2024/09/SGSE-Intrusion-and-Voip-Dashboard-User-Manual.pdf>