

SGSE COMPATIBILITY TEST

Product: SPC Monitor
 Software Platform: Milestone XProtect
 Date: 10/01/2025

Tested software versions

SPC Monitor	1.25.0110
XProtect Corporate	2024 R1

Performance test

SPC Monitor	
Execution of the plugin in the Management Client	Supported
Add panel	Supported
Reception of alarms configured in Milestone	Supported
Receiving alarms configured in Plugin	Supported
Definition of a rule with SPC events	Supported
Definition of a rule with an action	Supported
Configuration of system roles on SPC elements	Supported
Configuration of map with SPC elements	Supported
Change of zone icons	Supported
Panel icon status changes	Supported
Zone icons status changes	Supported
Area or group icons status changes	Supported
Output icons status changes	Supported
Acting commands on panel	Supported
Acting commands on zones	Supported
Acting commands on areas or groups	Supported
Receiving alarms	Supported
Execution of rules	Supported
Alarm reception by disconnection of the panel	Supported
Status details	Supported

Acknowledge alarms from map	Supported
Spanish language configuration	Supported
English language configuration	Supported
French language configuration	Supported
Italian language configuration	Supported
Display of error messages in Smart Client	Supported

Images



MIP Plug-ins

MIP Plug-in	Version	Developed by
SPC Monitor	01.25.0110	SGSE

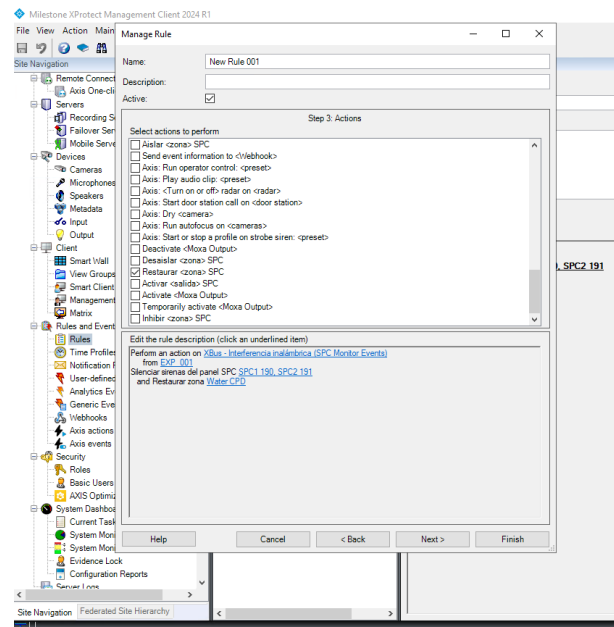
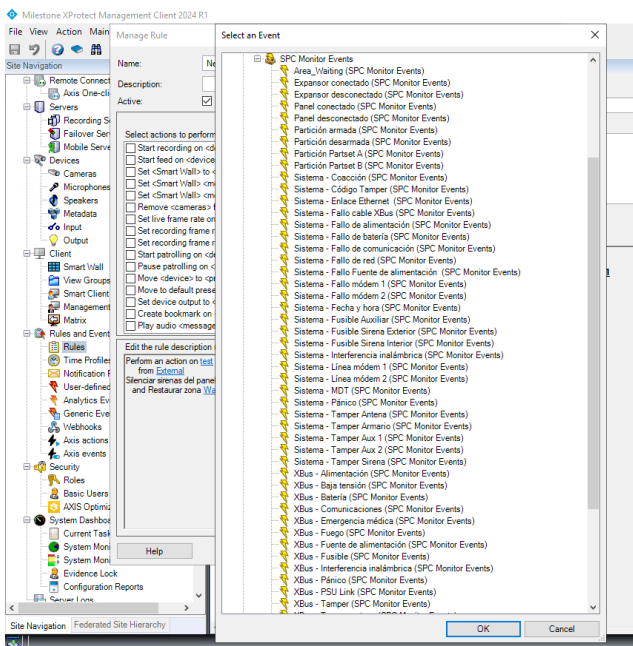
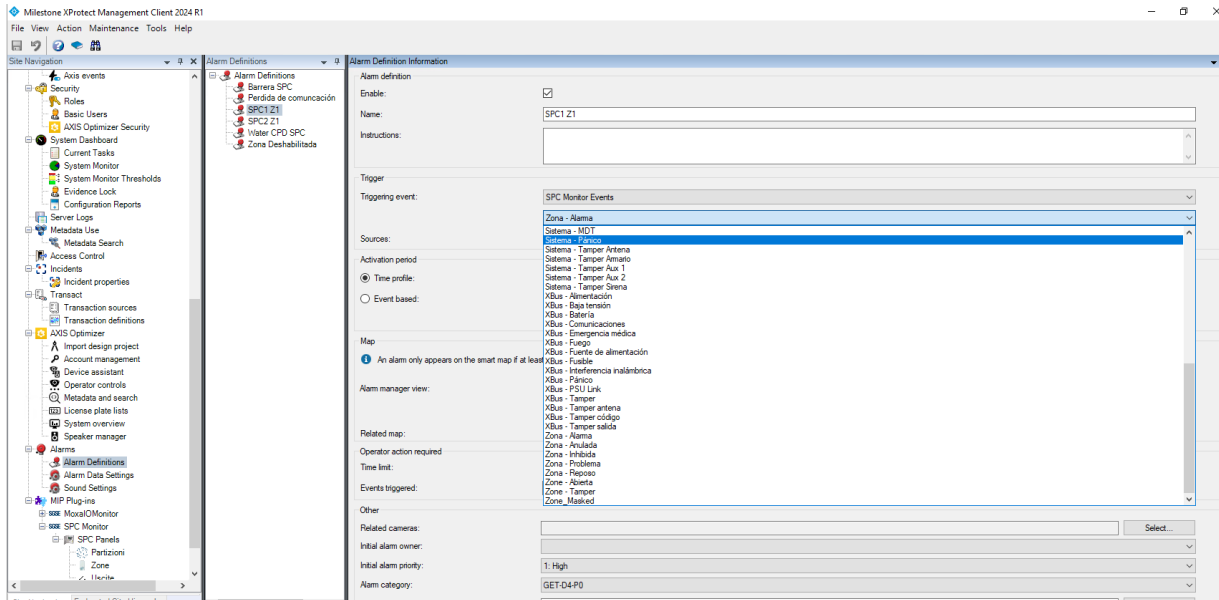
The screenshot displays the Milestone XProtect Smart Client interface. The top navigation bar includes 'New View (1 + 2*)', 'Exports', 'Search', 'Alarm Manager', 'Incidents', 'Axis insights', and 'System Monitor'. The main area is divided into three sections:

- Map:** Shows a geographical map with various sensors and zones. Labeled items include 'Gas Alarm 1', 'Zone 9', 'Generic Alarm', 'Water CPD', 'Zone 14', 'MG para PANCO', 'G1', 'MG Esp12 - NQIE', and 'PR 2'.
- Events Log:** A table listing system events. The selected event is:

Time	Message	Source	ID
8:41:34 13/01/2025	Server Responding	WIN-KR09B333P	21
- Alarms List:** A table showing active and recent alarms.

Time	Priority Level	State Level	State Name	Message	Source	Owner	ID
13:38:40 10/01/2025	1	1	New	Zone - Alarm	Water CPD		727
13:38:40 10/01/2025	1	1	New	Zone - Alarm	Water CPD		728

At the bottom of the interface, there are 'PLAYBACK' and 'LIVE' buttons.



Would you like to know more?

https://sgse.eu/wp-content/uploads/2024/01/SPCMonitor-Installation-Guide-and-User-Manual_v1.0.pdf