

SGSE COMPATIBILITY TEST

Product: Tecnoalarm Monitor
 Software Platform: Milestone XProtect
 Date: 17/01/2025

Tested software versions

Tecnoalarm Monitor	2.25.117.0
XProtect Corporate	2024 R1

Performance test

Tecnoalarm Monitor	
Execution of the plugin in the Management Client	Supported
Add panel	Supported
Reception of alarms configured in Milestone	Supported
Receiving alarms configured in Plugin	Supported
Definition of a rule with Tecnoalarm events	Supported
Definition of a rule with an action	Supported
Configuration of system roles on Tecnoalarm elements	Supported
Configuration of map with Tecnoalarm elements	Supported
Change of zone icons	Supported
Panel icon status changes	Supported
Zone icons status changes	Supported
Area or group icons status changes	Supported
Output icons status changes	Supported
Acting commands on zones	Supported
Acting commands on areas or groups	Supported
Receiving alarms	Supported
Execution of rules	Supported
Alarm reception by disconnection of the panel	Supported
Status details	Supported
Acknowledge alarms from map	Supported

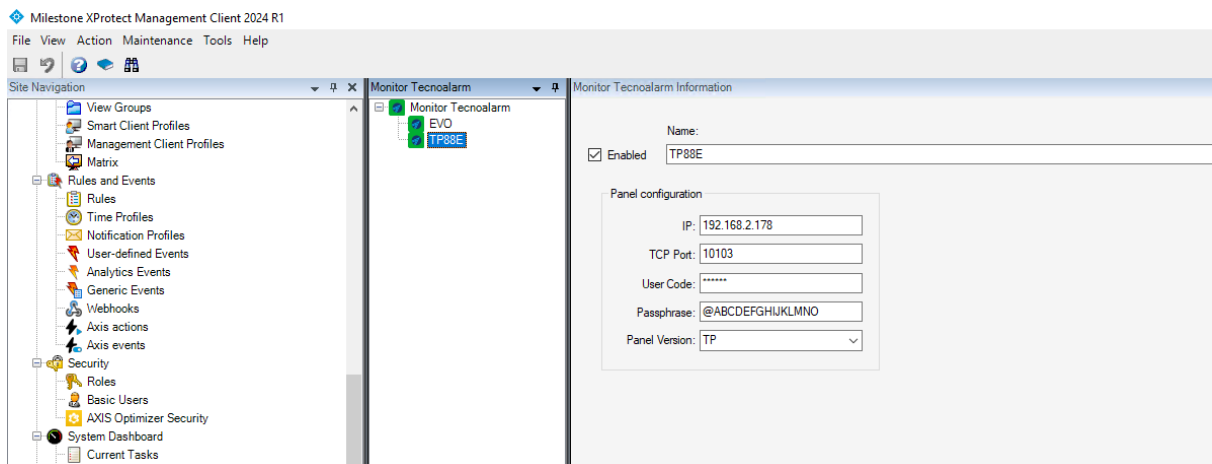
Spanish language configuration	Supported
English language configuration	Supported
French language configuration	Supported
Italian language configuration	Supported
Display of error messages in Smart Client	Supported

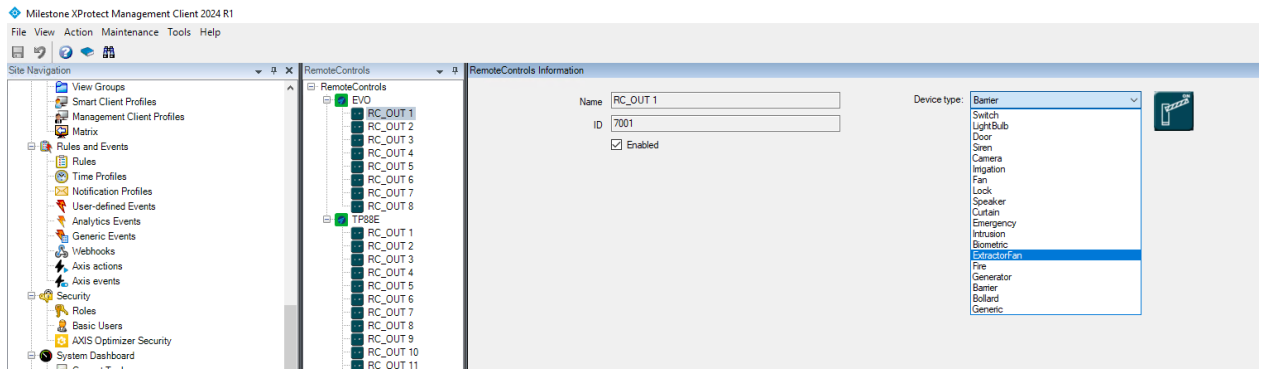
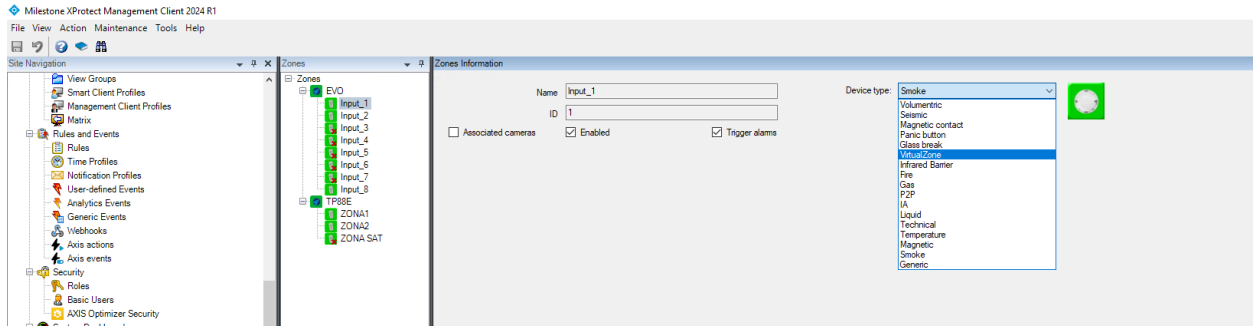
Images



MIP Plug-ins

MIP Plug-in	Version	Developed by
Tecnoalarm Plugin	2.25.117.0	SGSE





The screenshot displays the SGSE (Soluciones Globales de Seguridad Electrónica) interface. On the left, a 3D model of a building is shown with several security components labeled: TP88E, PART 1, ZONA1, RC_OUT1, EVO, Program for zones: 1,3, Program for zones: 2,8, Input_1, Input_8, Input_2, and RC_OUT1. A context menu is open over the ZONA1 component, listing actions such as Show alarms, Acknowledge alarms, Disable all new alarms, Ignore status, Arm, Disarm, Bypass, Untypass, Center map here, Zoom in, Zoom out, Zoom to standard size, Home, Back, Forward, and Status details. On the right, the SGSE logo and name are visible, along with an event log table.

Time	Message	Source	ID
1:23:41 PM 1/17/2022	Armed program	PART 1	45151
1:22:22 PM 1/17/2022	Rejected command	TP88E	45150
1:22:15 PM 1/17/2022	Armed program	Program for zones: 1,3	45149
1:21:45 PM 1/17/2022	Arming program	Program for zones: 1,3	45148
1:21:45 PM 1/17/2022	Armed zone	Input_1	45147
1:21:39 PM 1/17/2022	Disarmed program	Program for zones: 1,3	45146
1:21:38 PM 1/17/2022	Zone_Normal	Input_1	45145
1:21:26 PM 1/17/2022	Program_Alarm	Program for zones: 1,3	45144
1:21:26 PM 1/17/2022	Zone Alarming	Input_1	45143
1:21:17 PM 1/17/2022	Armed program	PART 2	45142
1:21:02 PM 1/17/2022	Panel is busy	TP88E	45141
1:20:44 PM 1/17/2022	Program_Alarm	PART 1	45140
1:20:44 PM 1/17/2022	Zone Alarming	ZONA1	45139

At the bottom, an Alarms table shows a single entry:

Time	Priority Level	State Level	State Name	Message	Source	Owner	ID
1:20:44 PM 1/17/2022	1	1	New	Zone Alarming	ZONA1		837

This screenshot shows the same SGSE interface as the first, but with a different context menu open over the ZONA1 component. The menu options are: Show alarms, Acknowledge alarms, Disable all new alarms, Ignore status, Isolation, Reintegration, Center map here, Zoom in, Zoom out, Zoom to standard size, Home, Back, Forward, and Status details. The event log at the bottom shows a new entry:

Time	Priority Level	State Level	State Name	Message	Source	Owner	ID
1:20:44 PM 1/17/2022	1	1	New	Zone Alarming	ZONA1		837

Would you like to know more?

<https://sgse.eu/wp-content/uploads/2024/12/Tecnoalarm-Monitor-Plugin-Manual-ENG.pdf>