

SGSE

Soluciones Globales de Seguridad Electrónica

RISCO MONITOR

Installer and User Manual

Content

1. Document versions	2
2. Introduction	3
3. Solution architecture	4
4. Installation	5
5. Licensing	8
A. Getting a UID.....	8
B. Applying the license.....	8
Workstations (only SmartClient).....	9
6. Configuration	10
Set up a panel	10
Configuration of Elements:.....	10
Sensor Types.....	12
Alarm Definition.....	12
Rules: events.....	13
Rules: actions	14
Role permissions	15
7. Operation.....	16
A. Event/Alarm viewer	16
B. RiscoMonitor tab	16
Panel technical alarms	18
Util buttons.....	18
Panel messages.....	19
Events log.....	19
Partitions detailed view	19
Zones detailed view	20
C. ViewItem.....	20
D. Maps	20
E. WebClient and Milestone Mobile.....	23
8. Troubleshooting.....	24
Integrated systems	24
Required equipment.....	24
Communication failures.....	24
More info	24

1. Document versions

Version	Date	Author	Changes in the version
1.0	05/2019	SDA	First version (English)
1.1	05/2019	SDA	Pictures also in English
1.2	03/2021	SDA	Included new features: outputs, new events. Some pictures update pending.
1.3	07/2022	DBL	Included for the LightSYS Plus device version
1.4	12/2024	IXR	Updated iconography, licensing, status details, associated cameras, and alarm trigger.

2. Introduction

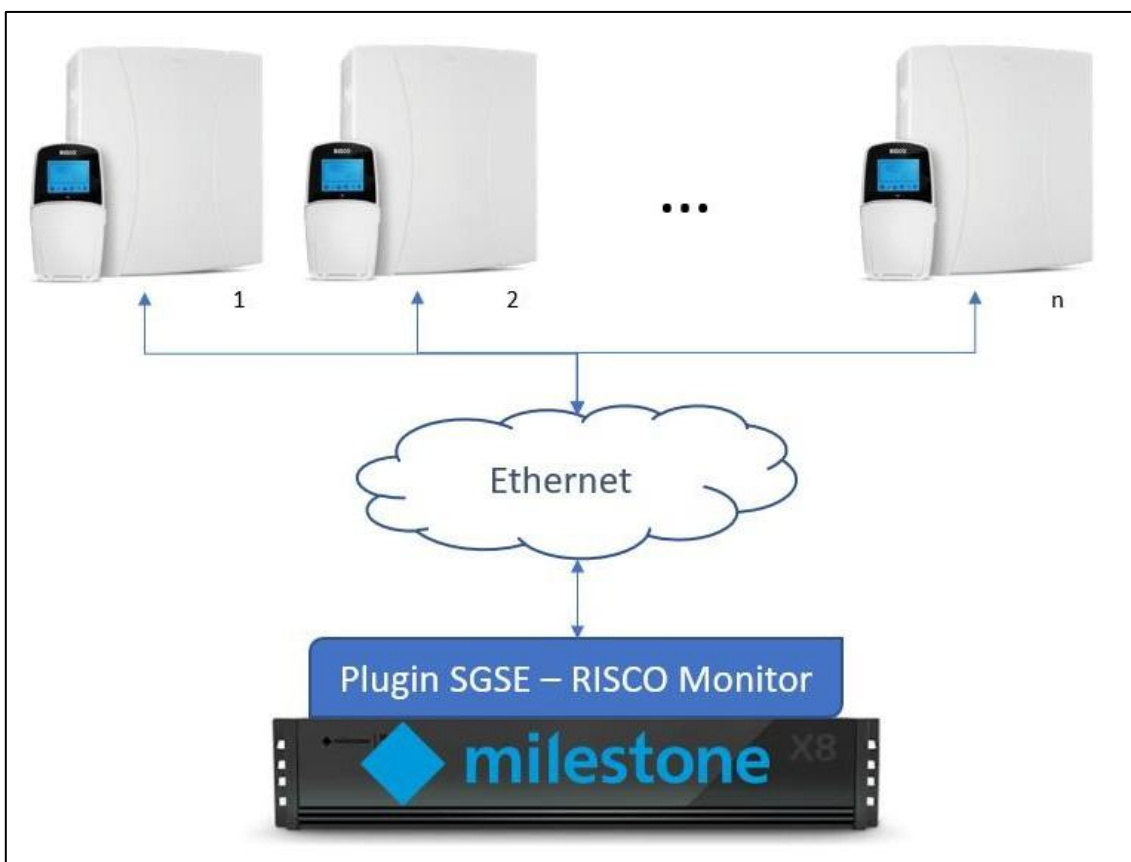
The purpose of this document is to explain the operation, installation and use of the software solution called "*RISCO Monitor*".

This solution consists of a plugin that allows to monitor and interact with certain [RISCO](#) hybrid intrusion systems, ProSYS™ Plus and LightSYS™2, from the user interface and the working environment of the platform XProtect® of [Milestone](#).

In this way, the monitoring of the intrusion system is available together with the advantages of the XProtect® VMS for video and alarm management. CCTV and intrusion in a single interface.

3. Solution architecture

The architecture of the solution is described in the scheme below:



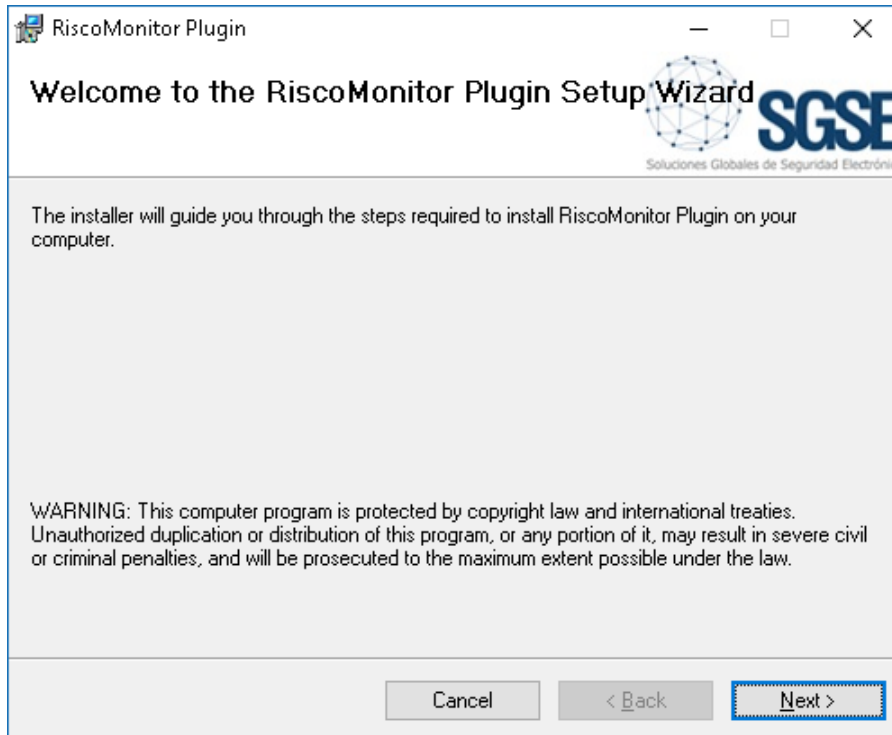
Through the Ethernet network, the plugin establishes communication with configured panels.

Once the communication is established, it imports the panel configuration and keeps the communication channel open to:

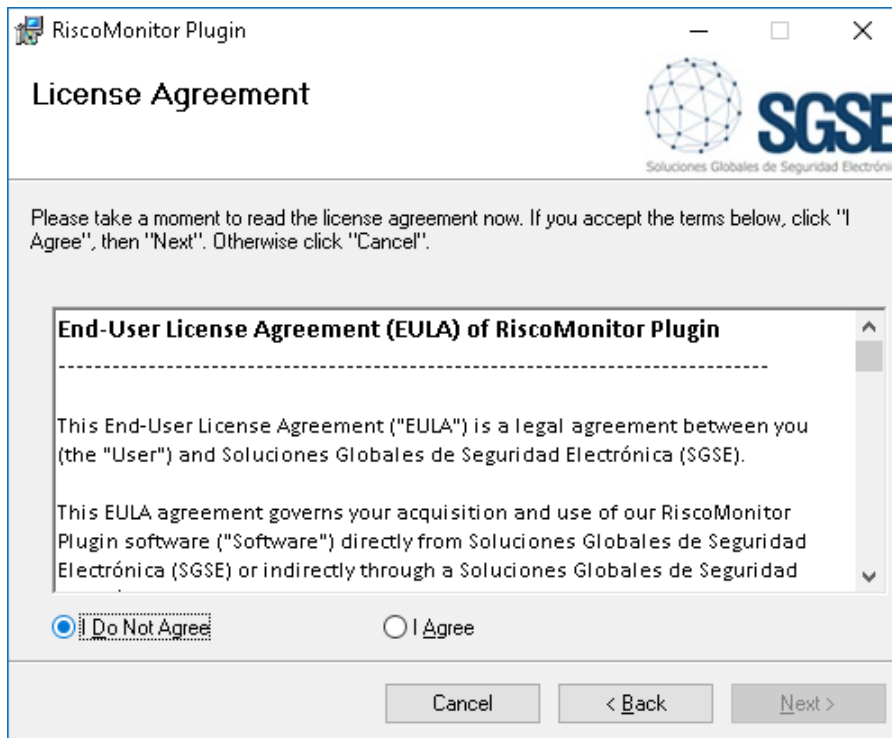
- Send commands to the panel
- Ask the panel for the status of some elements (partitions, zones, outputs)
- Receive notifications when the status of panel/partitions/zones/outputs change

4. Installation

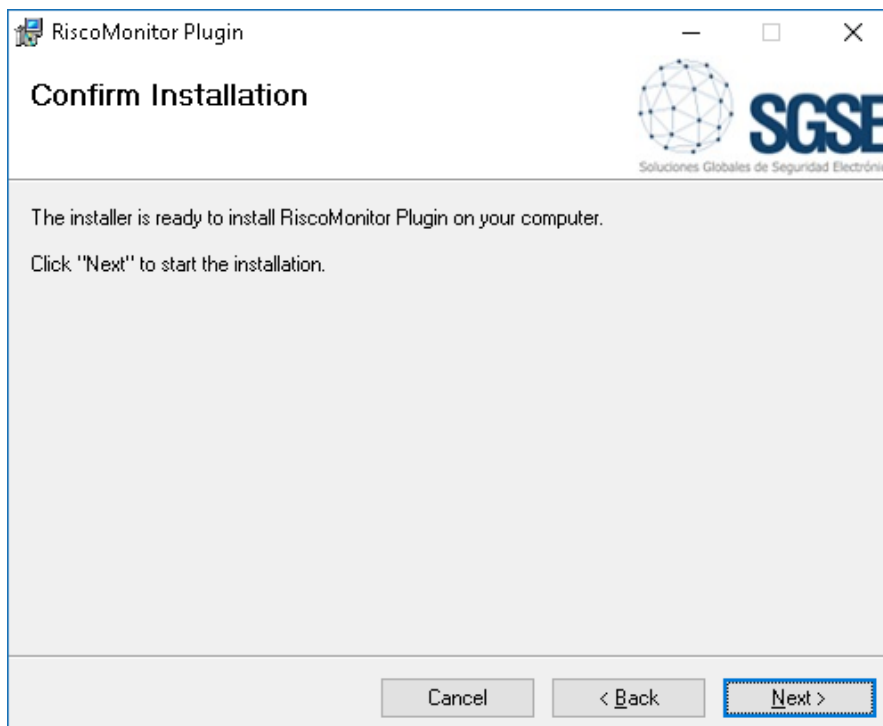
To install the plugin, simply execute with administrator rights the installer "Installer_PluginRiscoMonitor_x64.msi" provided by SGSE. The process is automatic. Throughout the different screens of the installer, we will only have to accept the End User License Agreement, a mandatory condition to be able to use the plugin.



Click "Next >" to start the installation process.

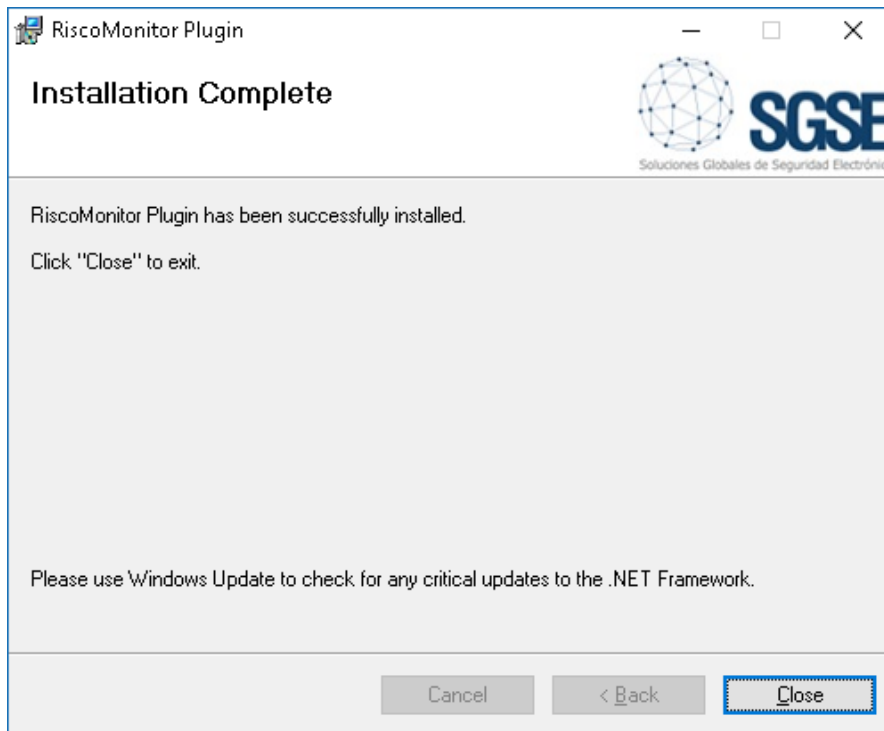


You will have to read and accept the End User License Agreement in order to proceed with installation.



Click "Next >" to proceed and install the plugin files.

If Windows User Account Control is enabled, you may have to allow the installer to go ahead with installation.



Once the process is finished, we can click "Close". The plugin is already installed!

5. Licensing

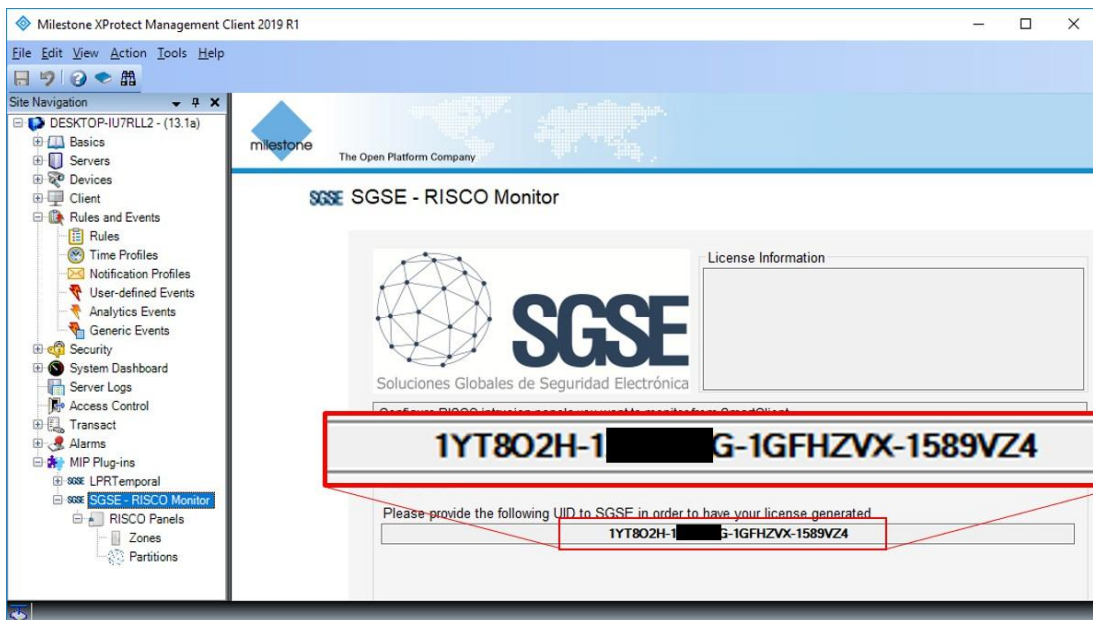
The plugin needs a license to run. Each panel must be licensed. These licenses are generated by SGSE. The procedure to obtain the license file corresponding to the acquired license is described below.

A. Getting a UID

In order to generate the license, you must provide the corresponding UID. This UID is a unique identifier to which the license is bound.

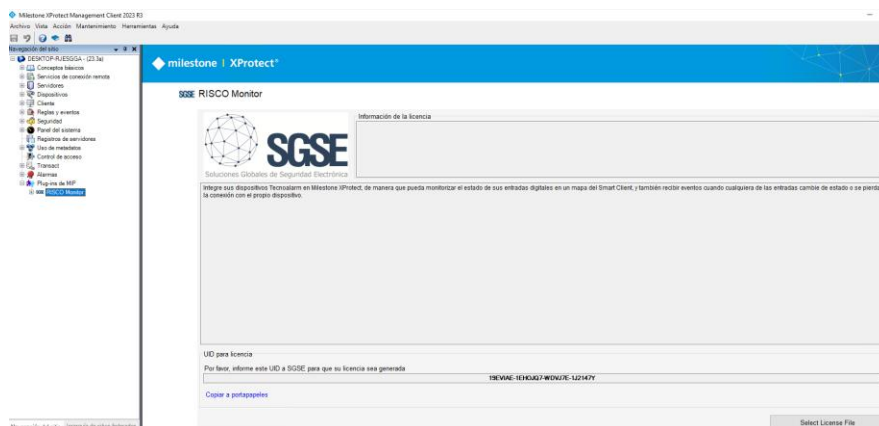
To get this code, you have to run XProtect® Management Client after installing the plugin, and go to the corresponding menu item.

In that screen, when the plugin is not licensed, you will see the corresponding UID.

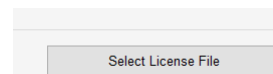


Please provide this UID to SGSE, and you will get your license file generated.

B. Applying the license



Click on the “Select the license file” button to apply the received license.



You can also perform the operation manually by copying the license file to the plugin directory. By default:

```
C:\Program Files\Milestone\MIPPlugins\RiscoMonitor\
```

In case you are working with a XProtect® version where you don't have Management Client, but Management Application instead, then you will have to copy the license file to the next folder too:

```
C:\Program Files (x86)\Milestone\MIPPlugins\RiscoMonitor\
```

After applying the license, Event Server must be restarted so that changes take effect and we can use the plugin.

Workstations (only SmartClient)

To generate the UID in a workstation where you don't have XProtect® Management Client, you will have to use the SGSE tool, “*UID Generator*”.

Please, contact SGSE to get this tool.

6. Configuration

The plugin has been designed to simplify as much as possible its configuration process, so that the start-up is as simple as possible for the installer.

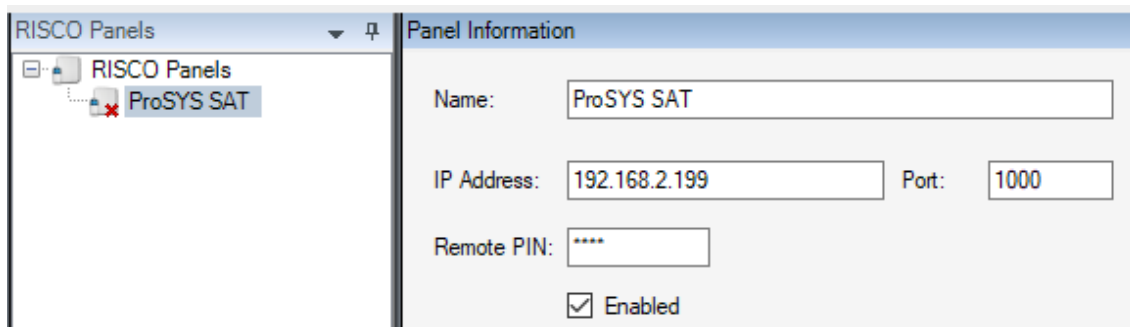
Set up a panel

To set up a panel in Milestone, the procedure is extremely simple.

You just have to assign a name to the panel, to identify it in the system, and configure the needed parameters to establish the connection between plugin and panel over Ethernet:

- IP address of the panel
- Port in which it is listening for incoming connections.
- Integration Remote Code

Default port, if configuration of the panel has not been changed, is TCP port 1000.



After saving changes, the plugin will try to connect automatically with the panel and, if everything is properly configured, it will import the panel configuration (partitions, zones, zones to partitions association), and the state of each element (panel technical alarms, and state of partitions and zones).

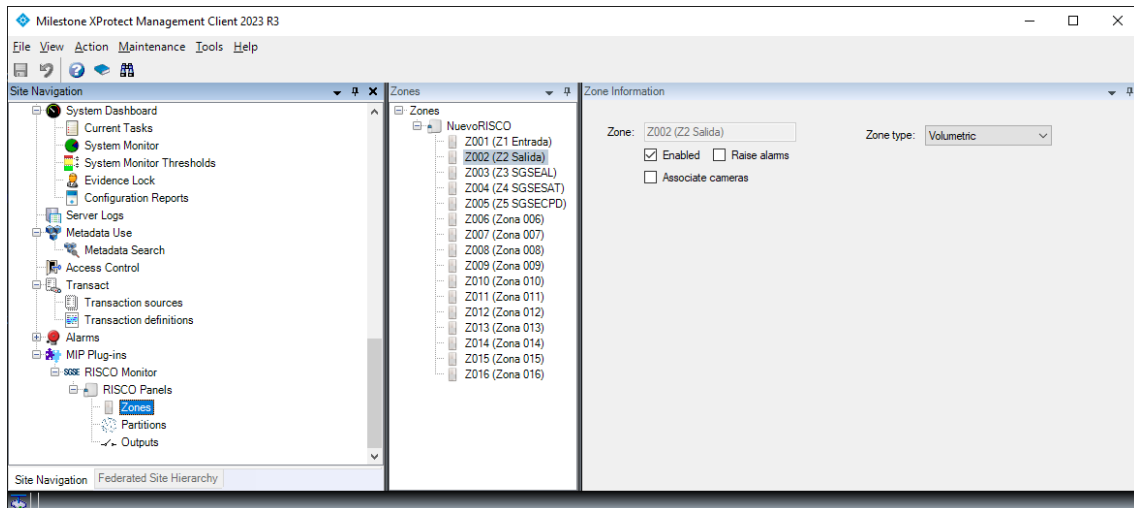
The plugin will automatically create in Milestone the items corresponding to the partitions and zones of the panel. These items will be accessible from the interface of Management Client.

We can see the download process information in the Event Server MIP Logs.

Configuration of Elements:

If the connection has been successful, we can proceed with the configuration. A tree structure will be created with the groups of elements retrieved when the plugin connects to the system.

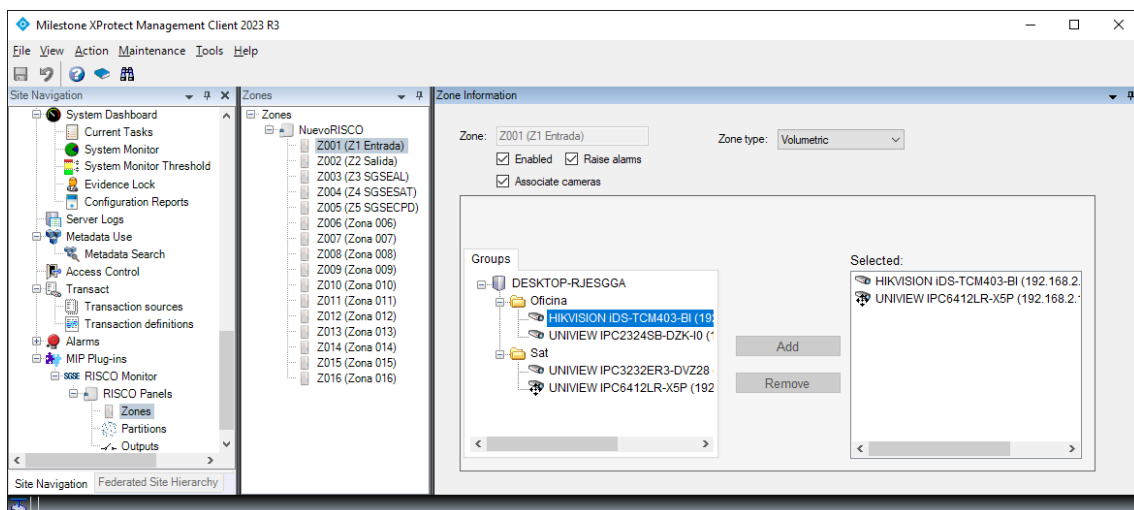
Clicking on each group, which contains its corresponding elements, will display them in a new tree structure. Clicking on the selected element will open a form with the available options.



The different groups have the option to rename, enable management, and/or send an alarm. The latter functionality allows an alarm to be triggered in Milestone when an event related to the element being configured occurs, without the need to configure it in the alarm configuration panel. Please refer to the alarm management section.

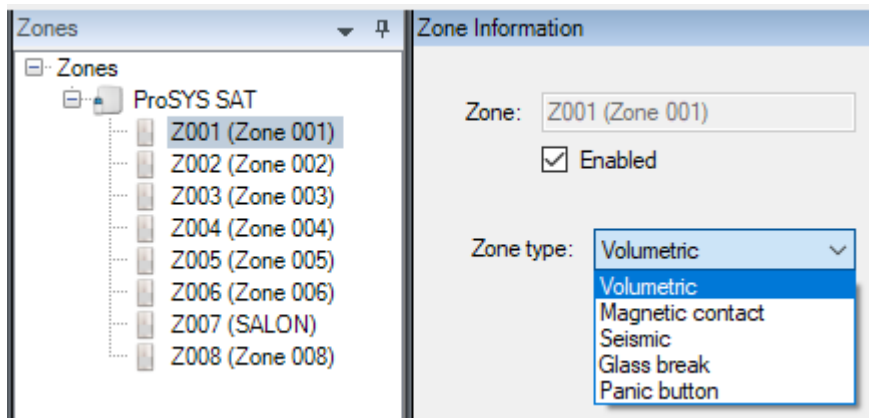
Finally, zones have a new management parameter that allows associating one or more cameras in the event of an alarm, from existing cameras in XProtect. You can easily navigate through the menu to select the desired camera(s). You also have the option to enable or disable this feature through the "Associate Cameras" tab.

This can also be done if you want specific events and alarms from the device connected to the panel to be notified. Additionally, you can add the associated cameras to the notifications to facilitate incident management.



Sensor Types

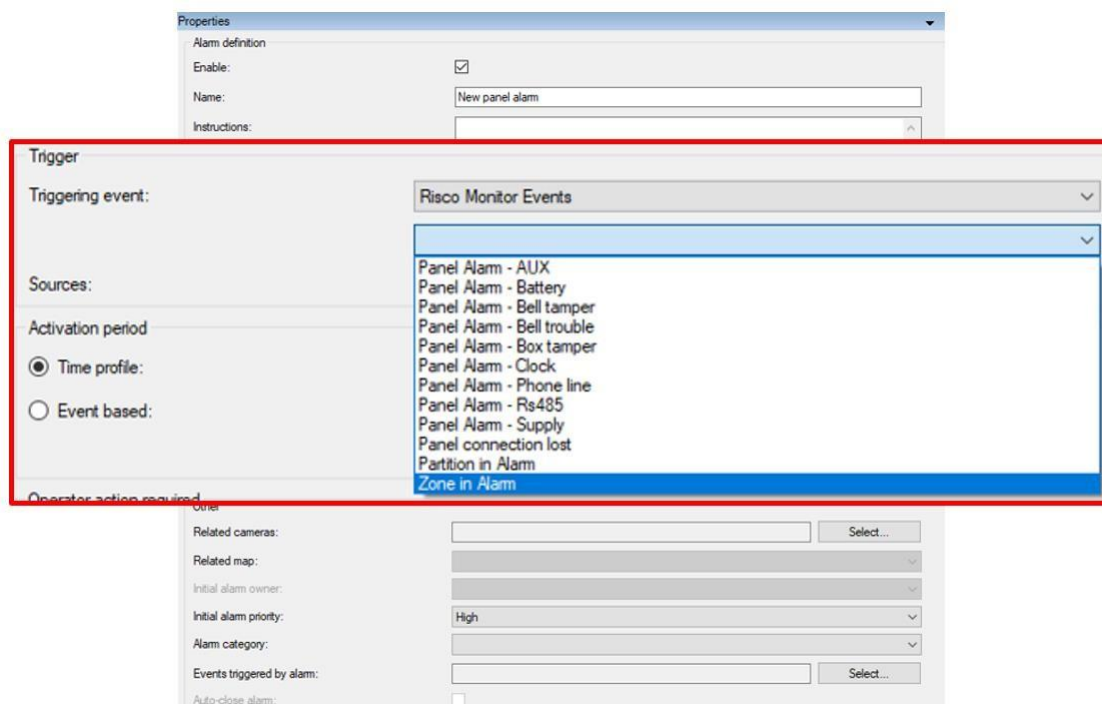
The plugin allows selecting the type of sensor used in each zone or output. This will change the icon of the element on the Smart Client map, ensuring that the information the operator receives from the intrusion system is as complete as possible.



Alarm Definition

This plugin adds some event definitions to Milestone, corresponding to the events that the panel sends. These events can be panel technical alarms, or an indication that a partition or a zone is in alarm.

Each event can be defined in Milestone as an alarm. You just have to go to “Alarm definition” section, within Management Client, create a new alarm whose triggering event is an event from the Risco Monitor Events group, and define the item(s) from which we want this event to be considered an alarm.

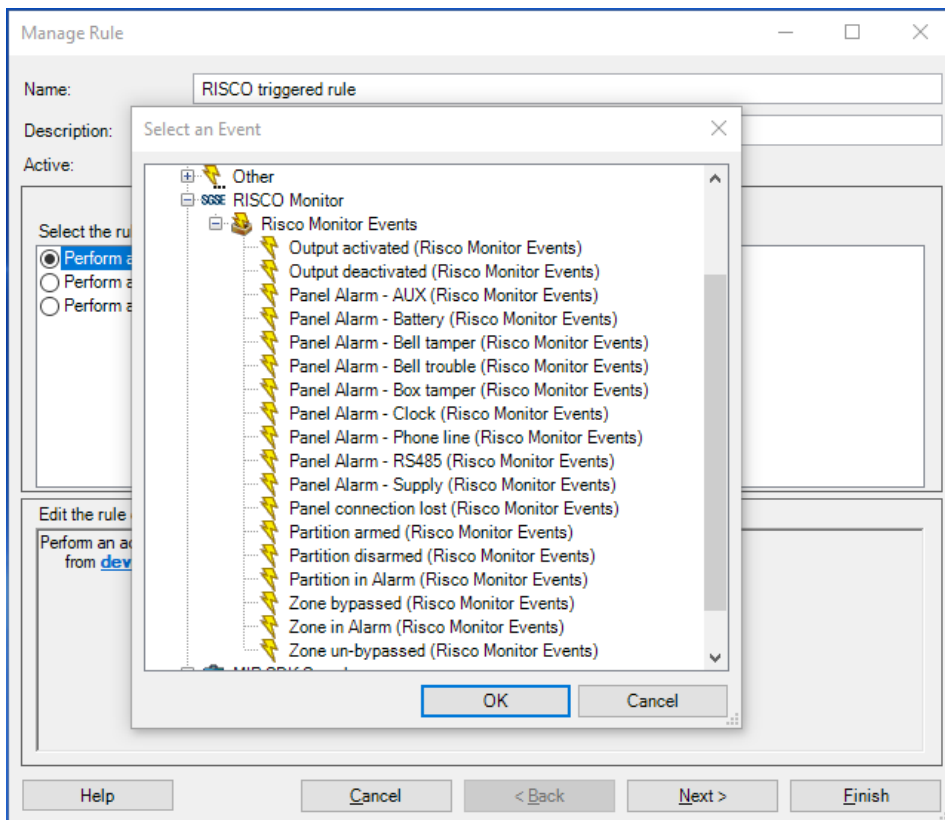


Rules: events

Those events can also be used to trigger Milestone rules. Just create a new rule and select as “Triggering Event” one of the events from those added by the plugin.

The events that plugin adds currently are:

- Partition in alarm
- Partition armed.
- Partition disarmed.
- Zone in alarm
- Zone bypassed.
- Zone un-bypassed.
- Panel connection lost.
- Output activated.
- Output deactivated.
- Technical alarm at the panel. Can be:
 - AUX
 - Battery
 - Bell tamper
 - Bell trouble
 - Box Tamper
 - Clock
 - Phone line
 - RS485
 - Supply

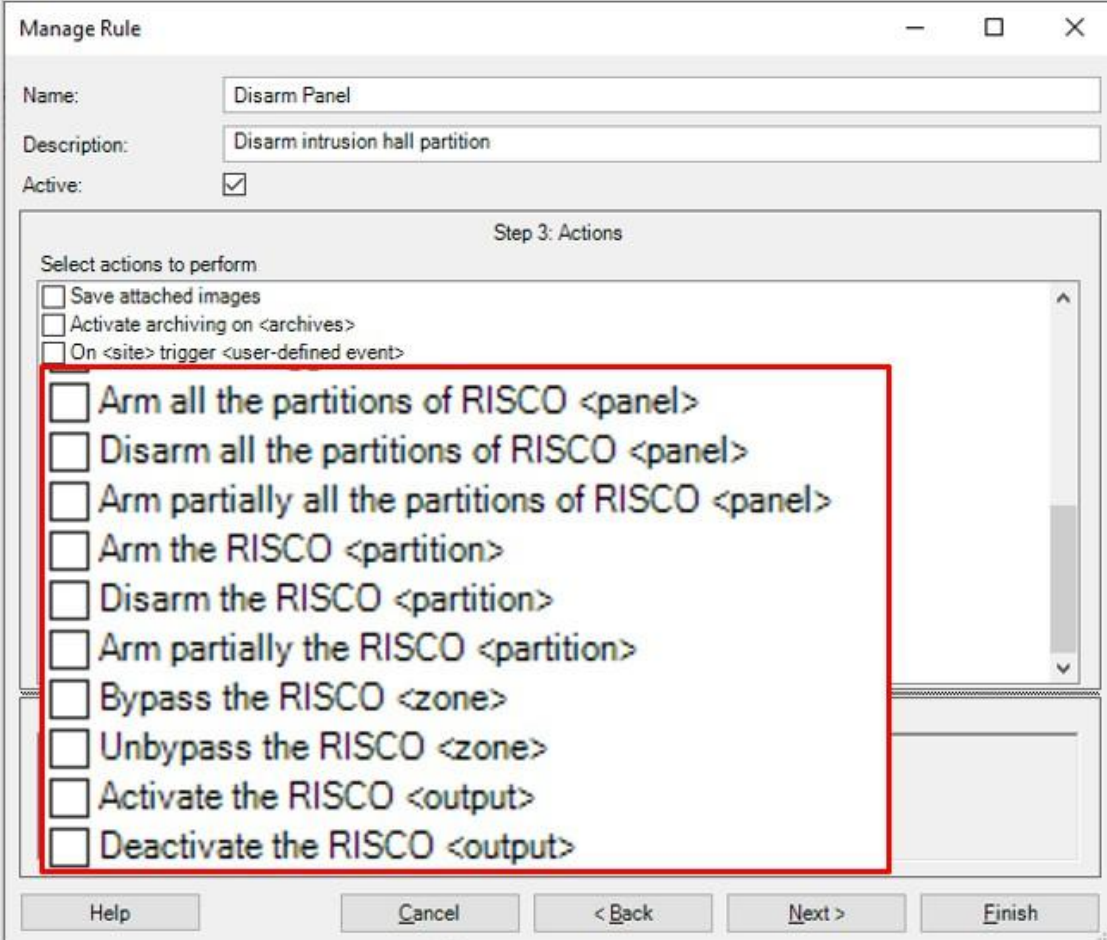


Rules: actions

With the actions defined by the plugin, Milestone can interact with panels when a defined rule is triggered.

We can define rules to trigger the following actions on panels:

- Arm the panel.
- Partially arm the panel.
- Disarm the panel.
- Arm a partition.
- Partially arm a partition.
- Disarm a partition.
- Bypass a zone.
- Un-bypass a zone.
- Activate an output.
- Deactivate an output.



Manage Rule

Name:

Description:

Active:

Step 3: Actions

Select actions to perform

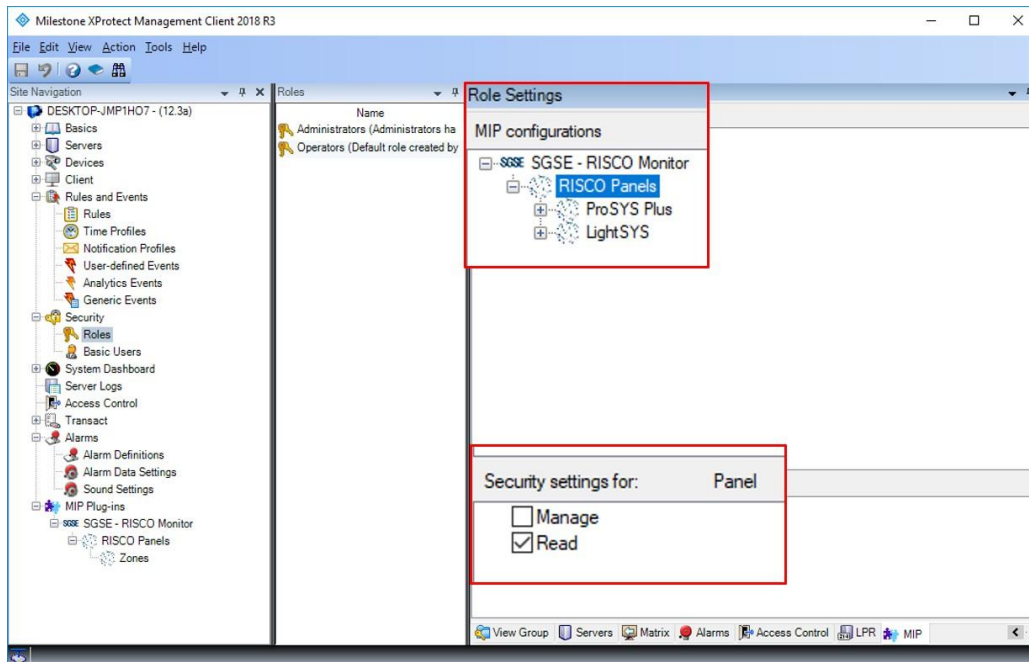
- Save attached images
- Activate archiving on <archives>
- On <site> trigger <user-defined event>
- Arm all the partitions of RISCO <panel>
- Disarm all the partitions of RISCO <panel>
- Arm partially all the partitions of RISCO <panel>
- Arm the RISCO <partition>
- Disarm the RISCO <partition>
- Arm partially the RISCO <partition>
- Bypass the RISCO <zone>
- Unbypass the RISCO <zone>
- Activate the RISCO <output>
- Deactivate the RISCO <output>

Buttons: Help, Cancel, < Back, Next >, Finish

Role permissions

The plugin allows you to control elements based on roles permissions applied to Milestone user. In particular, the possibility to interact with elements can be limited by using the “*Manage*” permission.

If a user belongs to a group or has a role which has no “*Manage*” permission over an element, then this user will not be able to operate that item (arming, disarming, bypassing...).



7. Operation

Risco Monitor plugin allows you to monitor and interact with panels. Every action is performed from the SmartClient, which is the standard user interface in XProtect®.

From SmartClient there are several options to monitor the status of the panel and its elements, as well as to interact with the device.

A. Event/Alarm viewer

From the standard XProtect® events and alarms viewer, alarms and events coming from the intrusion panels can be viewed and managed.

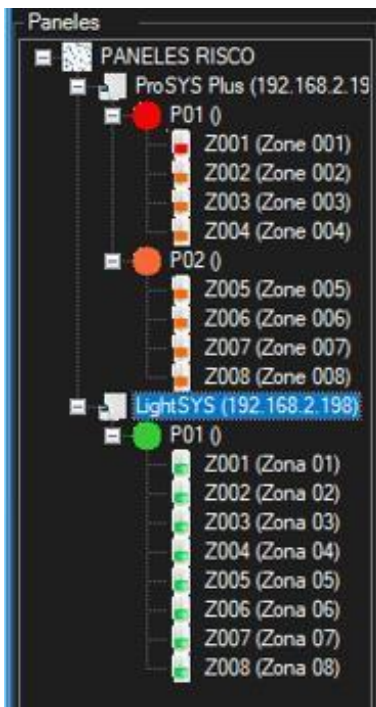
Alarmas	Personalizado (filtro aplicado)	Borrar filtro	Informes	1-100		
Hora	Nombre de est	Mensaje	Fuente	Etiqueta	Propietario	ID
10:42:37 22/10/2018	Nuevo	Zona - En Alarma	ProSYS Plus	Zona Z001		78467
10:42:37 22/10/2018	Nuevo	Particion - En Alarma	ProSYS Plus	Particion P01		78466
10:42:36 22/10/2018	Nuevo	Panel Alarma - Bateria	ProSYS Plus	Panel ProSYS Plus(192.168.2.199)		78464
10:42:36 22/10/2018	Nuevo	Panel Alarma - Problema Campana	ProSYS Plus	Panel ProSYS Plus(192.168.2.199)		78465
10:42:35 22/10/2018	Nuevo	Panel Alarma - Linea Telefonica	LightSYS	Panel LightSYS(192.168.2.198)		78463
10:42:35 22/10/2018	Nuevo	Panel Alarma - Bateria	LightSYS	Panel LightSYS(192.168.2.198)		78462
10:08:39 22/10/2018	Nuevo	Zona - En Alarma	ProSYS Plus	Zona Z001		78461
10:08:38 22/10/2018	Nuevo	Particion - En Alarma	ProSYS Plus	Particion P01		78460
10:08:37 22/10/2018	Nuevo	Panel Alarma - Bateria	ProSYS Plus	Panel ProSYS Plus(192.168.2.199)		78458
10:08:37 22/10/2018	Nuevo	Panel Alarma - Problema Campana	ProSYS Plus	Panel ProSYS Plus(192.168.2.199)		78459
9:27:02 22/10/2018	Nuevo	Panel Alarma - Linea Telefonica	el segundo	Panel el segundo(192.168.2.198)		78457
9:27:02 22/10/2018	Nuevo	Panel Alarma - Bateria	el segundo	Panel el segundo(192.168.2.198)		78456

B. RiscoMonitor tab

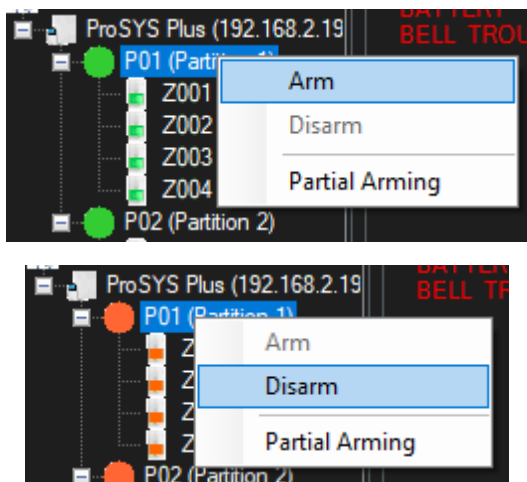
The plugin adds a new workspace to the SmartClient interface, that can be accessed from the tab called "RiscoMonitor".



From this workspace, we have access to a tree view in which all panels integrated in Milestone appear. Zones are grouped by partition, according to the association made in the panel configuration.



From this tree view we can select a panel to see it in a detailed view, or we can also send commands directly from the context menu (secondary button of the mouse).



In the right part of the screen, occupying most of it, we have the detailed view of the panel that we have selected in the tree view.

This screen divides into some sections:



1. Panel technical alarms
2. Util buttons
3. Panel messages
4. Events log
5. Partitions detailed view
6. Zones detailed view

Panel technical alarms

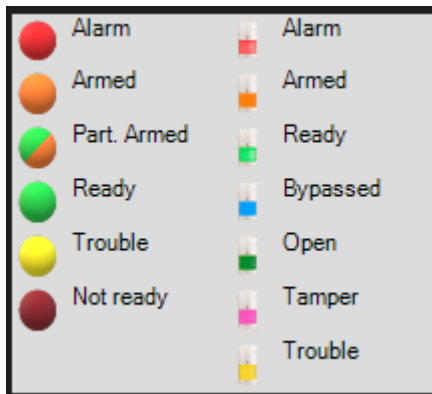
Here you can see the panel technical alerts that are active, even if they have not been defined as alarms in XProtect®.

Util buttons

This section contains two buttons that allow us to:

- Synchronize: set the current XProtect® time to the panel
- Show legend: it shows the colours legend for this screen.

As a reference, the colour legend is shown below:



Panel messages

Within this box relevant messages from panel are shown. As an example, if we try to partially arm a partition that is already armed, a message sent by the panel as a response to our command will appear, saying that the partition is already armed and cannot be armed.

Events log

The panel event log can be queried from this section. Log can be queried in two different ways:

- From starting date
- Specifying the number of messages to be retrieved



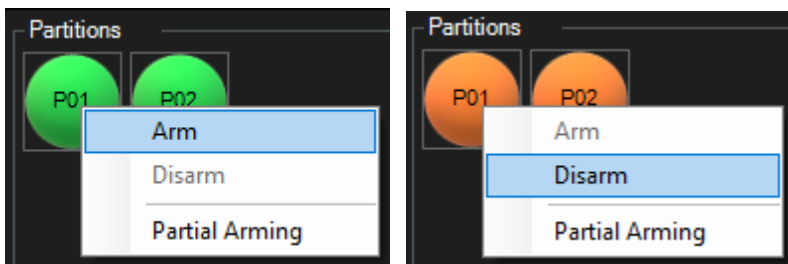
Results can be filtered in order to see only events that contain a specific text string, just by entering that text string into the “Filter logs:” field before executing the query.

Partitions detailed view

All the partitions defined in the selected panel appear here, and their colour indicate their state, according to the legend.

Apart from quickly viewing the state, we can interact with partitions through the context menu (secondary button of the mouse), where we can:

- Arm a partition
- Partially arm a partition
- Disarm a partition

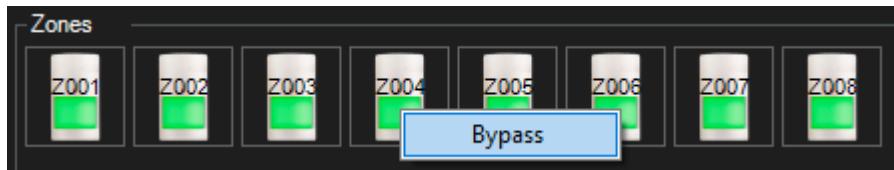


Zones detailed view

All the zones defined in the selected panel appear here, and their colour indicate their state, according to the legend.

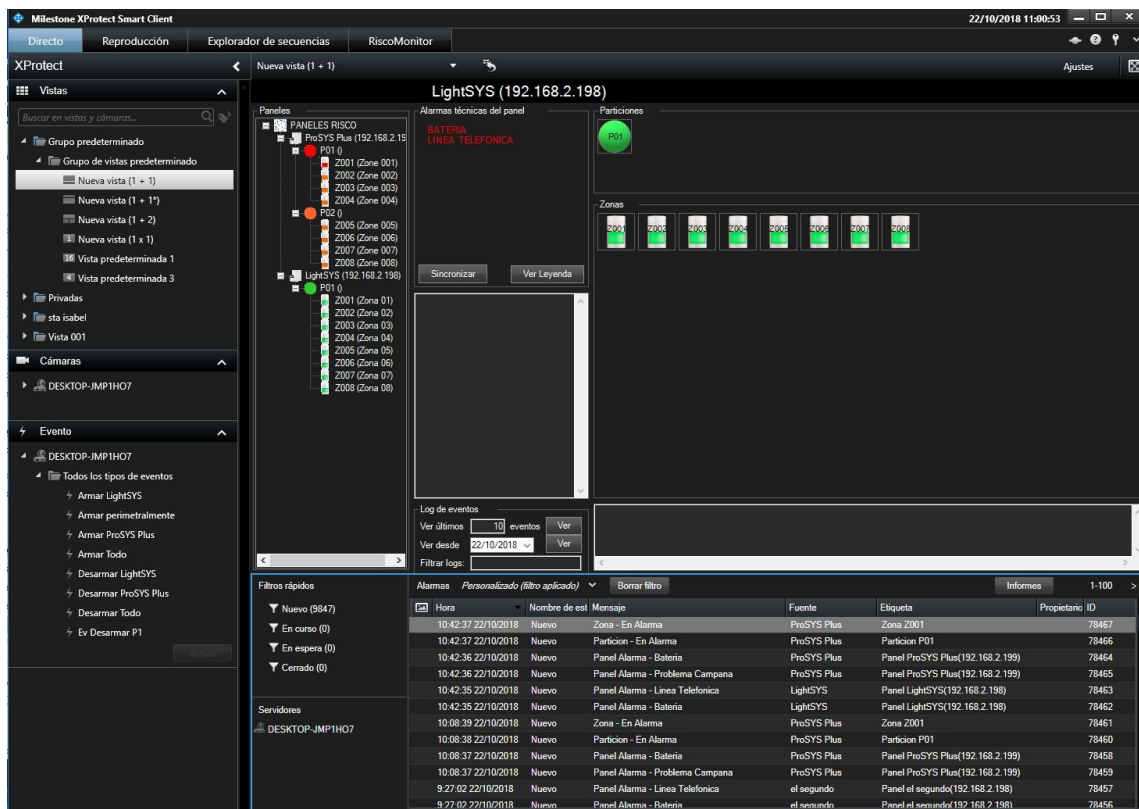
Apart from quickly viewing the state, we can interact with zones through the context menu (secondary button of the mouse), where we can:

- Bypass a zone
- Un-bypass a zone



C. ViewItem

The same window described above can be added to a multiple view of the SmartClient, dragging it in from the left menu in Setup mode, just like a camera view, the event viewer or a map. It is recommended that the view is big enough so as to be able to see properly all its elements.








D. Maps

The icons corresponding to panels, partitions, zones and outputs can be added to a XProtect® map.

Each icon will show the state of the corresponding element according to the colour legend referenced above.

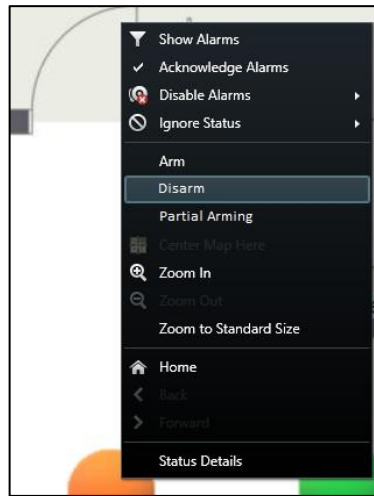
In addition to indicating the status with the corresponding color, the icons will adapt to the type of zone or output assigned in the configuration. This way, the icons can be represented on the diagrams with their corresponding icons, for example:

Type of sensor selected	Icon
Volumetric	
Magnetic contact	
Seismic	
Glass break	
Panic button	

In the case of outputs, the icon will display a closed contact when the output is active, and will show an open contact when the output is deactivated.



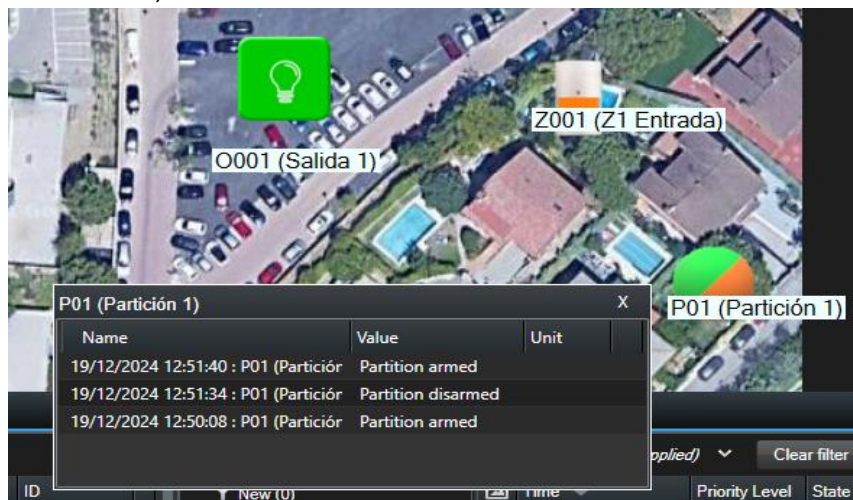
In addition, it will allow to interact with the element from its context menu (secondary button of the mouse).



In this way, you can:

- Panel
 - Arm all partitions
 - Partially arm all partitions
 - Disarm all partitions
- Partition
 - Arm
 - Partially arm
 - Disarm
- Zone
 - Bypass
 - Un-bypass
- Outputs
 - Activate
 - Deactivate

Also, in the context menu, we can select the "Status Details" function.



E. WebClient and Milestone Mobile

These interfaces do not support all the plugin functionalities, like the custom panel management interface or maps.

However, alarms can be received from these two interfaces, if they have been defined in the Management Client. Interaction with panels can also be performed by making use of plugin actions and *User defined events*, that will appear to the user as buttons.

8. Troubleshooting

Integrated systems

In case the integration does not work, please confirm the panel and its firmware version to be plugin compatible. Integrated systems are:

- ProSYS™ Plus
- LightSYS™2
- LightSYS™+

Tested firmware version for each panel are:

- ProSYS™ Plus: RP512-01.01.01.001 OSP Apr 24 2017
- LightSYS™2: RP432-5.72 OSP Jan 23 2018
- LightSYS™ +: RP432MP-01.00.00.0027 OSP Dec 13 2021

Compatibility is not granted if a different firmware version is used. Although later firmware versions should work properly, compatibility with each specific firmware version must be tested.

Required equipment

In order to communicate with the panel from Milestone, it must be equipped with an Ethernet module supporting multi-socket functionality. Ask your RISCO provider for more information.

Communication failures

In case of communication failures, restart the Event Server.

If the communication failures persist, check that no other device, system, or software is communicating with the panel through the remote integration protocol, such as the Configuration Software or another integration system, as this protocol only supports a single simultaneous connection.

There have been cases where the panel stops sending events through the Ethernet interface. This can be resolved by restarting the panel.

More info

For more info, please visit [plugin online information](#) or contact SGSE in the email address info@sgse.eu

