



VANDERBILT



SGSE

Soluciones Globales de Seguridad Electrónica

To the integrations in Milestone of the intrusion panels ProSYS Plus and LightSYS 2 from RISCO, Galaxy Dimension from Honeywell and Tecnoalarm already carried out by SGSE, a new integration is now added to the family of intrusion plugins.

These are the SPC panels from the manufacturer Vanderbilt. With this integration, the main intrusion manufacturers used in the vast majority of intrusion system installations in Spain are integrated into Milestone.

Again, we can monitor the status of our intrusion system, as well as receive events when alarms occur. We can also interact with the panel from the Smart Client through the commands enabled in the contextual menu of each icon, or through specific actions on the panel through rules.

And in this case, we can monitor the status of the X-BUS, thanks to the supervision of the alerts related to the keyboards and expanders connected to it.

Start Up

To integrate our SPC panel into Milestone, it must have the FlexC protocol (available from firmware version 3.6) and an Ethernet connection.

The Vanderbilt SPC panels actively establish communication through the FlexC protocol, so we will have to configure the corresponding parameters in the panel to communicate with the plugin, and in turn we will have to configure the plugin so that it is up to date, waiting to receive this communication.

The process is very simple. In addition to the panel configuration, it is enough to register the plugin as an ATP (alarm transmission path) in an ATS (alarm transmission system) of the panel. In the configuration of said ATP, we will have to indicate the IP address and the port on which the plugin will be waiting for the connection:

Identificación RCT (en la CRA)

ID CRA FlexC	<input type="text" value="1"/>	ID (1 a 99999999) de la CRA FlexC (por ej. SPC Com XT)
Dirección IP o URL CRA FlexC	<input type="text" value="192.168.1.50"/>	Dirección IP o URL de la CRA FlexC (por ej. SPC Com XT)
Puerto CRA FlexC	<input type="text" value="52000"/>	Puerto TCP de la CRA FlexC (por ej. puerto de escucha de SPC Com XT)

For correct operation, we will select the Ethernet communication mode and the S5 category (router), as we can see in the image:

Interfaz ATP

Medio de comunicación	<input type="text" value="Ethernet"/>	Medio empleado por la ATP para la comunicación
Categoría ATP	<input type="text" value="S5 (router)"/>	Categoría de la ATP

Finally, in the advanced configuration section of the ATP, we will indicate that we want to use an encryption mod with a fixed encryption key and we will define it (64 hexadecimal characters: 0-9 / A-F):

SPC Panels integration in Milestone

Cifrado AES 256 bits con CBC

Modo cifrado	Fijo	Actualización clave cifrado
Clave de 64 dígitos hexadecimales	*****	

With this configuration, the panel will try to establish a connection with the other end, the plugin, to send it event notifications and receive commands, according to the ATP configuration. Now you just need to tell the plugin to listen and accept this connection. Registering a panel in the plugin is very simple. We will only have to assign a name to the panel, to identify it in the system, and establish the necessary parameters for the connection. That is to say:

- The local IP address where the plugin will listen to the panel.
- The TCP port through which the panel waits for the connection.
- The fixed encryption key (the same one configured in the panel).
- A user with permissions on the panel to access the panel and be able to obtain the configuration and interact with the panel.
- The password for that user.

Información de SPC Panel

Nombre:

Habilitado ☒

Panel configuration

Local IP Address:

Listening Port:

Encryption Key:

Management User:

Management Password:

In case you want to integrate several panels in the same Milestone, each one must connect to the plugin through a different port. That is, a port will be configured to listen to each panel.

In addition, we will tell you how many keyboards and how many expanders are connected to the X-BUS, and Milestone will create them automatically.

Configuración adicional

Número de teclados:

Número de expansores:

☒ Generar evento en alertas inhibidas

☒ Generar evento en alertas aisladas

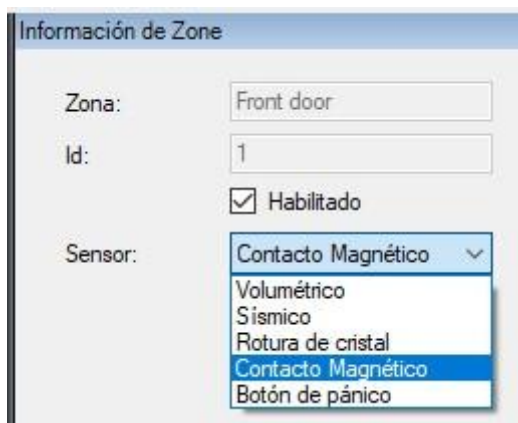
When finished, the plugin will start listening on the configured port, and when the panel tries to connect through that port, it will accept the connection and keep the communication channel open with the panel. It is done!

Configuration

ZONES

In order to provide the operator with information that reflects the intrusion installation as closely as possible, the plug-in allows selecting the type of sensor associated with each zone, so that the icon shown on the map matches the sensor installed. By default, the zone icon is a volumetric one.

To customize it, just go to the item corresponding to the zone for which we want to specify the type of sensor, and select a value from among those available.

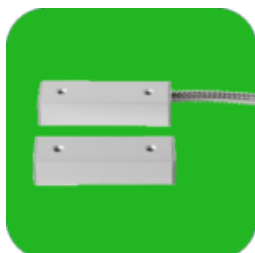


Currently, the sensor types that can be selected are:

Detector (default value)



Magnetic contact



Glass break



Sismic sensor



Panic button

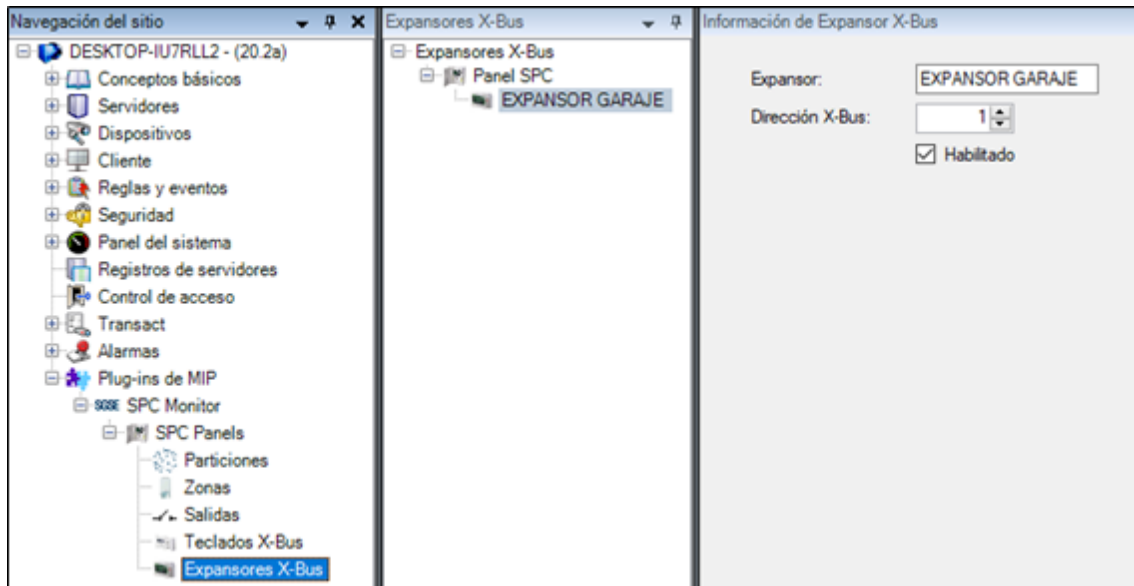


By default, the zones will appear represented by a detector icon when they are created.

ELEMENTS OF THE X-BUS

The keyboards and expanders that the plug-in automatically creates are created with generic names and correlative bus addresses. To associate the alarms from the panel with the corresponding item, it is necessary to configure the address that the element has within the X-BUS.

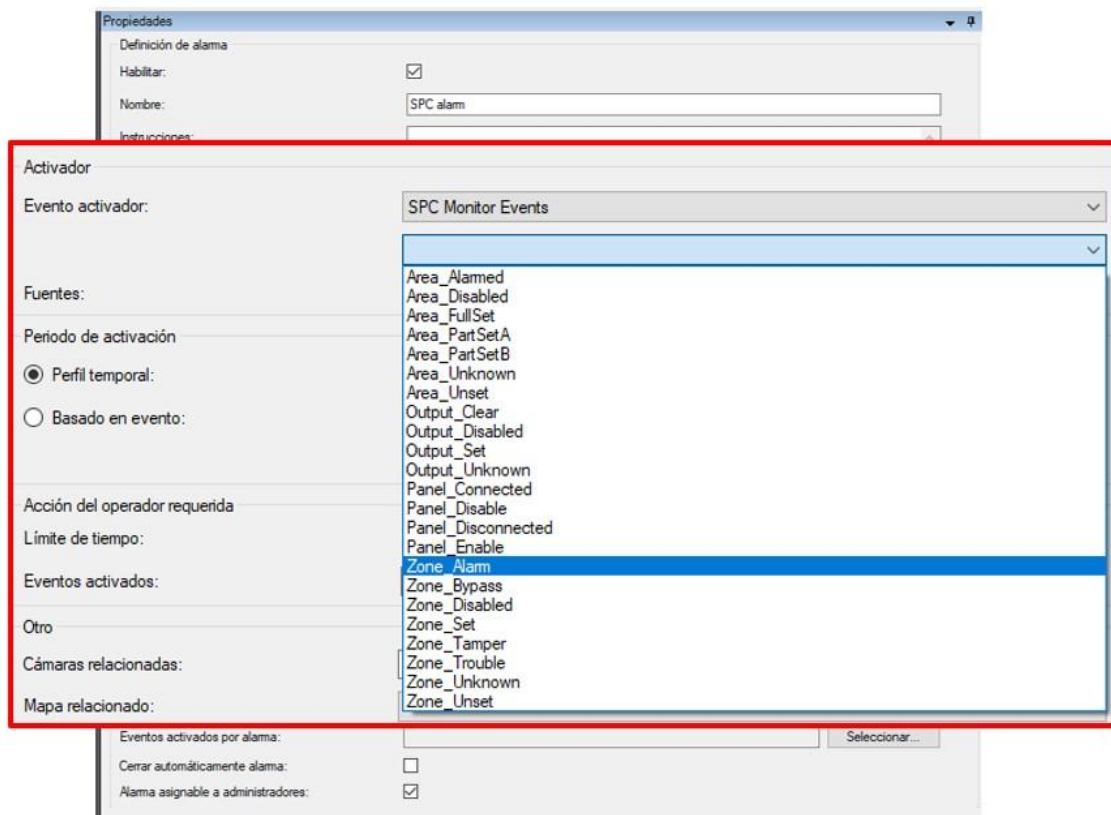
By selecting the keyboard or the expander in the elements tree, we can select the address that the device has.



EVENTS: RULES AND ALARMS

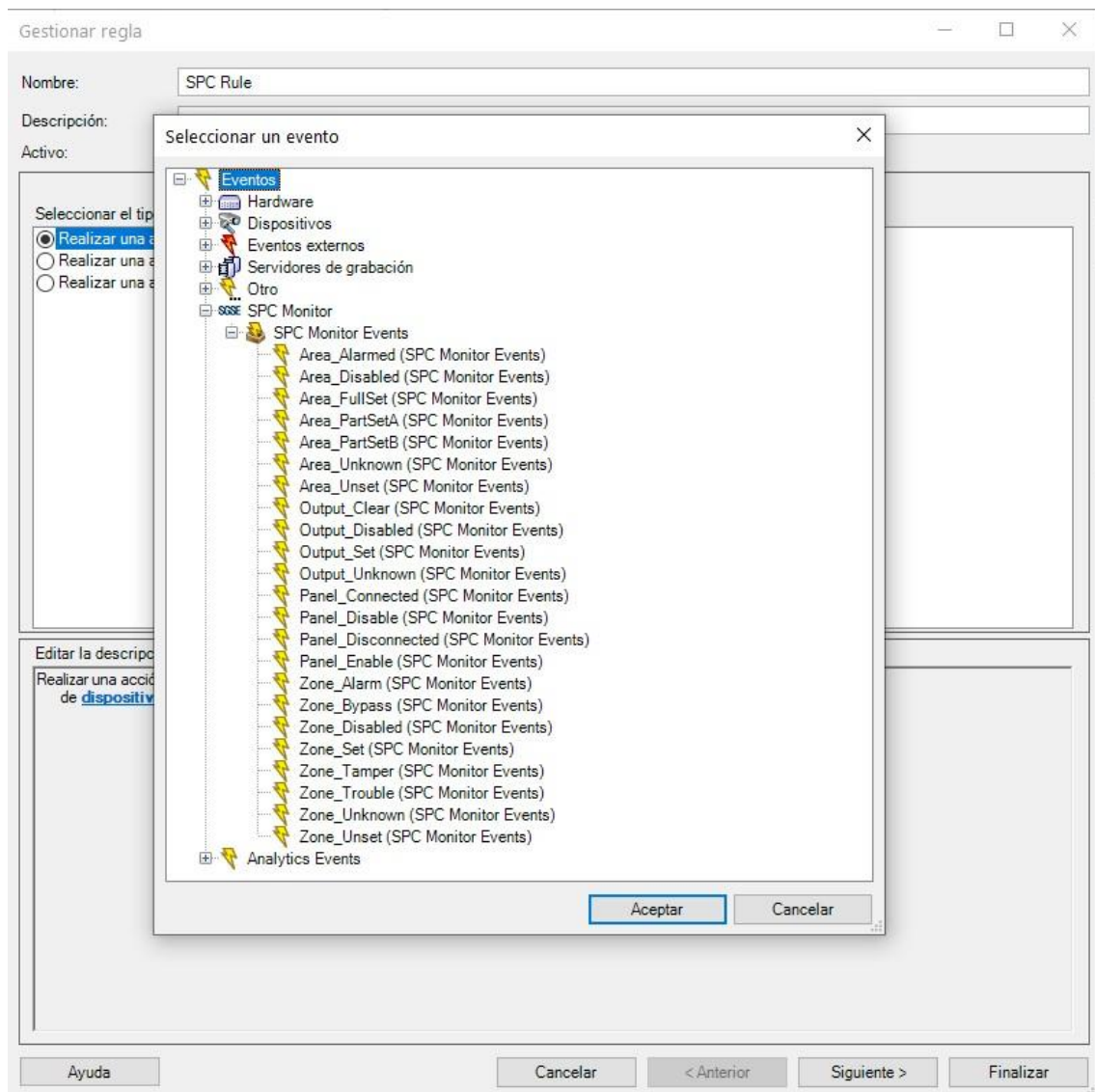
When intrusion events occur in the panel (detections, arming of partitions, disarming of partitions, etc.) the plugin will notify Milestone of these events.

With these events, and depending on their origin, we can define custom alarms in Milestone.



As with defining alarms, we can use plugin events to define automated rules in Milestone. That is, when an intrusion event occurs in the SPC panel, for example,

intrusion detection in one area or detection of sabotage in another area, we can carry out any of the multiple actions that the rules engine allows us : activate a digital output, play an audio message, reposition a PTZ camera, send an email, etc.



But the interaction with the rules module does not stop here, but it also allows us to interact with the intrusion panel as a consequence of any event that may occur in Milestone, including user-defined events, which can be activated from the SmartClient, from the WebClient and even from the Mobile Client.

The actions that we can perform on the panel are the following:

- Arm all partitions
- Silence speakers.
- Disarm all partitions.
- Set panel time and date.
- Restore all panels alerts
- Arm full / part A / part B of a partition.

SPC Panels integration in Milestone

- Disarm a partition.
- Activate / deactivate an output (actuation).
- Inhibit a zone.
- Uninhibit an area.
- Isolate a zone.
- Desisolate an area.
- Restore a zone.

Gestionar regla

Nombre: SPC Rule

Descripción:

Activo: ☒

Paso 3: acciones

Seleccionar las acciones que deben realizarse

- ☐ En el <sitio>, active el <evento definido por el usuario>
- ☐ Armar todas las áreas del <panel> SPC
- ☐ Silenciar <panel> SPC
- ☐ Desarmar todas las áreas del <panel> SPC
- ☐ Establecer fecha y hora del <panel> SPC
- ☐ Aceptar todas las alertas del <panel> SPC
- ☐ Armar <area> SPC
- ☐ Armar parcialmente A <área> SPC
- ☐ Armar parcialmente B <área> SPC
- ☐ Desarmar <área> SPC
- ☐ Desactivar <salida> SPC
- ☐ Activar <salida> SPC
- ☐ Inhibir <zona> SPC
- ☐ Desinhibir <zona> SPC
- ☐ Aislar <zona> SPC
- ☐ Desaislar <zona> SPC
- ☐ Restaurar <zona> SPC

Editar la descripción de la regla (haga clic en un elemento subrayado)

Realizar una acción en Área Alarmed (SPC Monitor Events)
de Todo Áreas

Ayuda Cancelar < Anterior Siguiete > Finalizar

In this way, for example, we can activate one of the panel outputs (actions) when a certain event has occurred in Milestone. Or we can create an event defined by the user, called “Arm system”, which when activated launches the command to fully arm the system. And we could activate the event «Arm system» from the Smart Client, from the Web Client or even from the Mobile Client.

X-BUS monitoring

The plugin developed by SGSE allows the monitoring of the X-BUS of the SPC. When registering the panel, the plugin creates the keyboards and expanders that we have indicated.

When an alert occurs on an X-Bus element, the notification will be associated with a bus address. If we have made the configuration correctly, the plugin will select the corresponding expander or keyboard as the event source. If there is no keyboard or expander configured in Milestone with the address that comes in the panel notification, then the plugin will associate the event with the panel itself.








The alerts available to monitor the status of the X-BUS through events in Milestone are the following:

- Feeding
- Low voltage
- Battery
- Communications
- Medical emergency
- Fire
- Power supply
- Fuse
- Wireless interference
- Panic
- PSU Link
- Tamper
- Antenna tamper
- Tamper code
- Tamper output

Operation and user interface

From the Smart Client we can see the status of the different elements of the panel: the partitions, the zones and the outputs (actions).

The icon will show us the current state of the element, through a color code. In the case of zones:

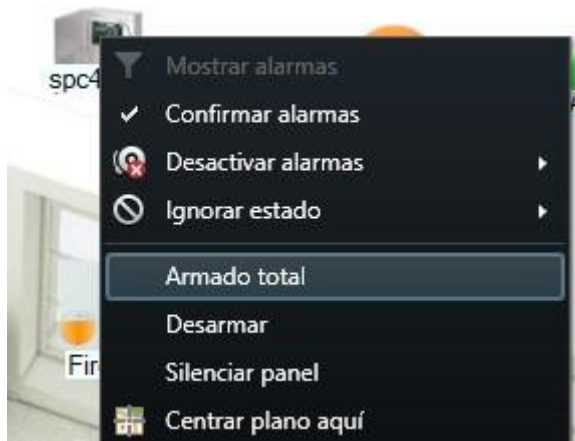
Color	Example	Meaning
Green		Repose. The zone is idle, not armed, and there is no problem. No intrusion alarms will go off.
Orange		Armed. The zone is at rest and armed. An intrusion alarm can go off.
Red		Alarm. The zone is in an alarm state
Blue		Canceled. The zone is inhibited or isolated.
Magenta		Tamper. The zone is on a state of tamper.
Yellow		Problem. There is a problem in the area.
Grey		Unknown. Zone status is unknown, or zone is disabled in Milestone

For partitions, the color coding is similar: green indicates standby, and orange indicates armed.

But not only can we see the status of the elements, but we can also interact with them, by clicking the right mouse button on them.

Depending on the type of element on which we click, the context menu will allow us to carry out certain actions. If we click on the icon:

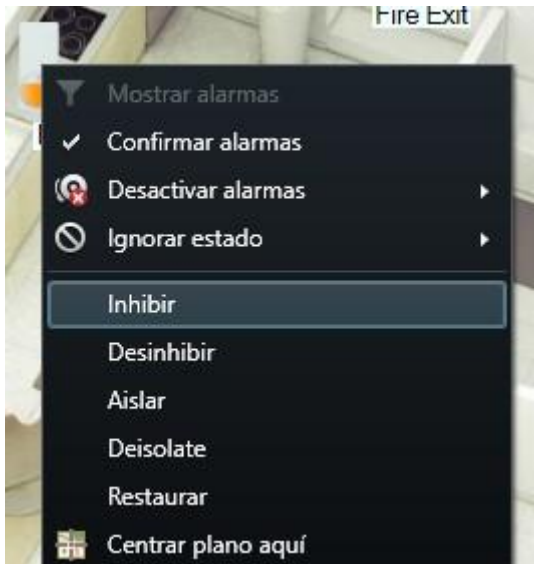
- **A panel.** We can:
 - Arm all partitions
 - Desarmr all partitions
 - Silence speakers
 - Restore all panel alerts



- **A partition.** We can:
 - Total arm
 - Partial A arm
 - Partial B arm
 - Disarm



- **A zone.** We can:
 - Inhibit it
 - Uninhibit it
 - Isolate it
 - Uninsulate it
 - Restore it

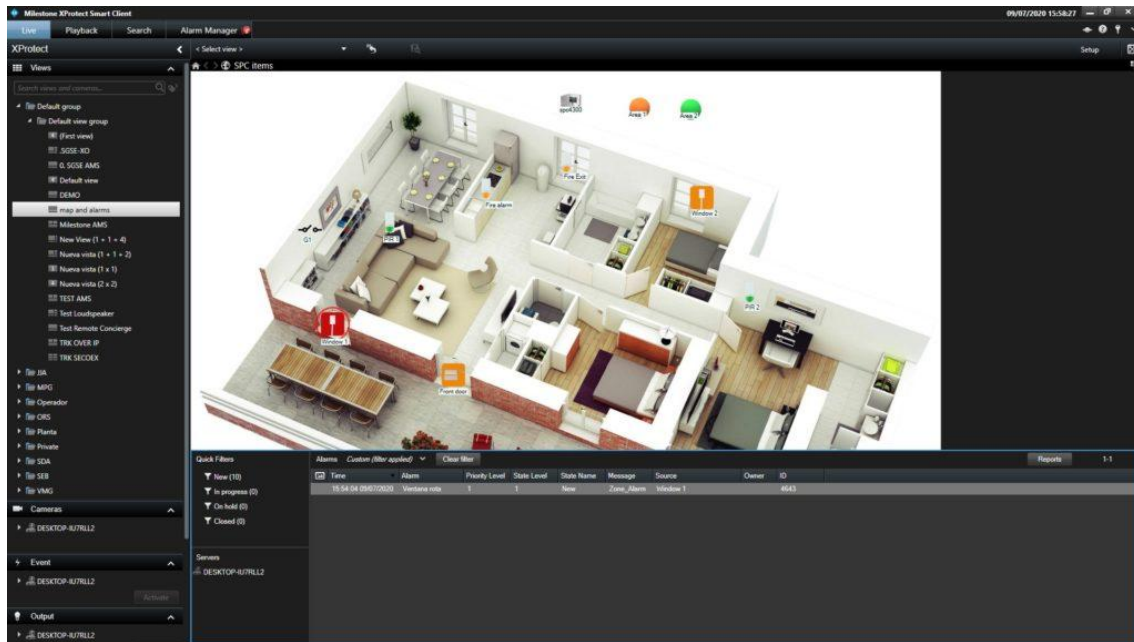


- **An output (action).** we can:
 - Activate it.
 - Desactivate it.



If an alarm on one of the elements has been defined in Milestone, when said alarm is triggered, the icon will be surrounded by the characteristic red flashing circle.

SPC Panels integration in Milestone



You can see in the following video the explanation of all the functionalities of this integration of the Vanderbilt SPC intrusion panels in Milestone developed by SGSE

Integrate your intrusion system into Milestone with SGSE.