

# SGSE COMPATIBILITY TEST

Product: Aritech Monitor  
Software Platform: Milestone XProtect  
Date: 16/04/2025

## Tested software versions

Aritech Monitor	1.25.0324
XProtect Corporate	2025 R1

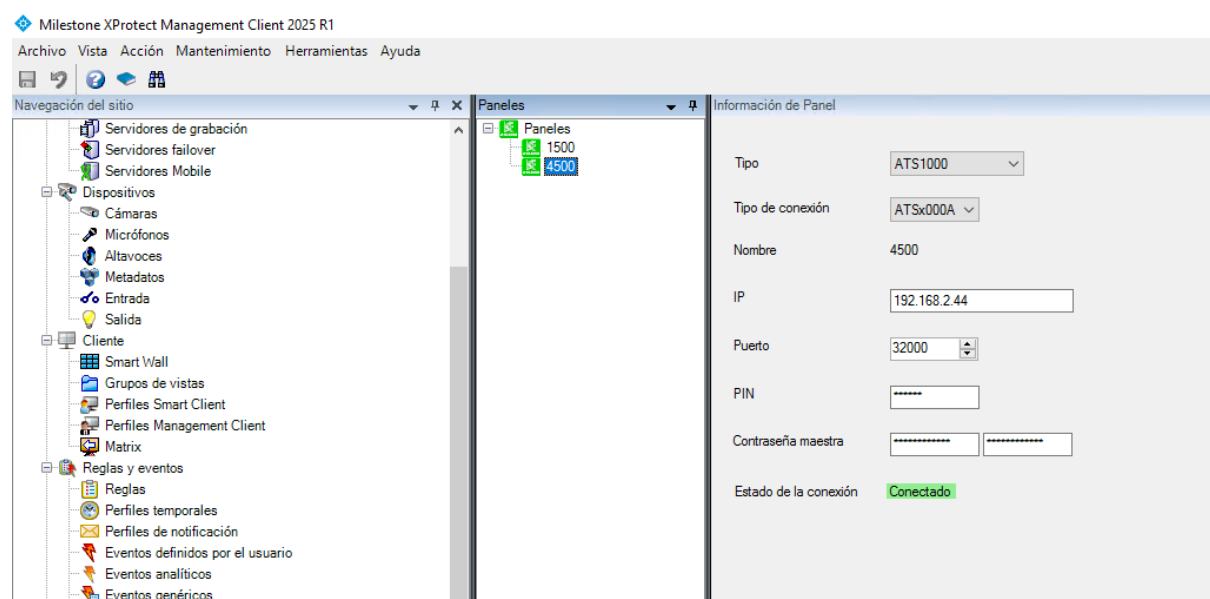
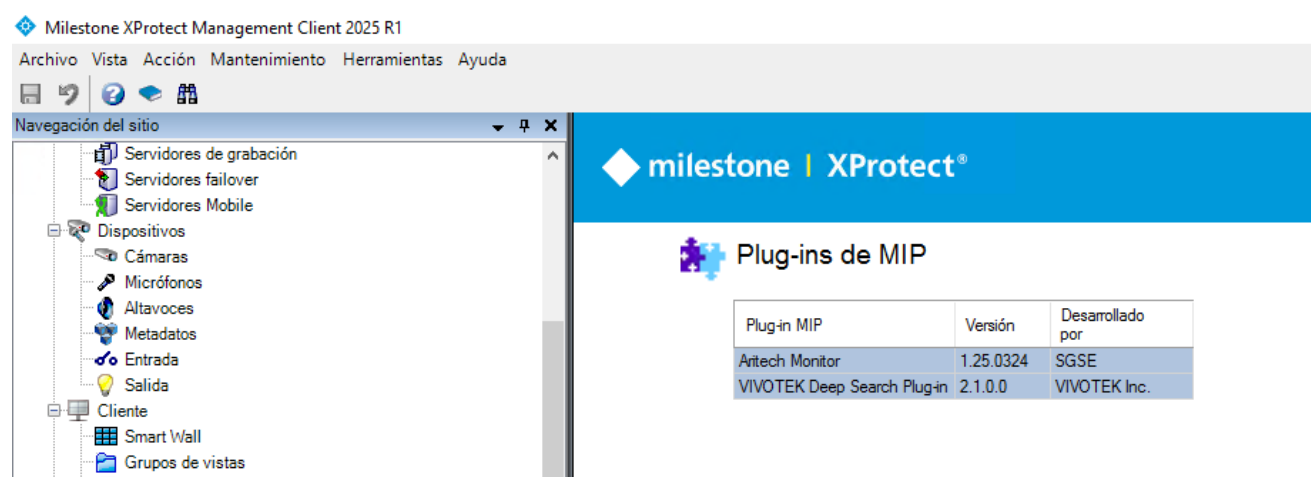


## Performance test

Aritech Monitor Monitor	
Execution of the plugin in the Management Client	Supported
Add panel	Supported
Reception of alarms configured in Milestone	Supported
Receiving alarms configured in Plugin	Supported
Definition of a rule with Aritech events	Supported
Definition of a rule with an action	Supported
Configuration of map with Aritech elements	Supported
Change of zone icons	Supported
Panel icon status changes	Supported
Zone icons status changes	Supported
Area or group icons status changes	Supported
Output icons status changes	Supported
Acting commands on zones	Supported
Acting commands on areas or groups	Supported
Receiving alarms	Supported
Execution of rules	Supported
Alarm reception by disconnection of the panel	Supported
Status details	Supported
Acknowledge alarms from map	Supported
Spanish language configuration	Supported

English language configuration	Supported
French language configuration	Supported
Italian language configuration	Supported
Display of error messages in Smart Client	Supported

## Images



Site Navigation

- Failover Servers
- Mobile Servers
- Devices
  - Cameras
  - Microphones
  - Speakers
  - Metadata
  - Input
  - Output
- Client
  - Smart Wall
  - View Groups
  - Smart Client Profiles
  - Management Client Profiles
  - Matrix
- Rules and Events
  - Rules
  - Time Profiles
  - Notification Profiles
  - User-defined Events
  - Analytics Events
  - Generic Events
  - Webhooks
- Security
  - Roles
  - Basic Users
- System Dashboard
  - Current Tasks
  - System Monitor
  - System Monitor Thresholds

Zones

- 1500
- 4500
  - Zone1234567890123
  - Zone 1
  - Zone 2
  - Zone 3
  - Zone 4
  - Zone 5
  - Zone 6
  - Zone 8 Garaje puerta

Zone Information

Name	Zone 2
ID	2
Type	Motion
Model	Motion_6910P
Alarms configuration	<input type="checkbox"/> Trigger alarms

Model list:

- Motion\_6910P
- Motion\_6921P
- Motion\_6930AMP\_SB
- Motion\_6931AMP
- Motion\_6931P
- Motion\_6933AMP
- Motion\_6941AMP
- Motion\_6943AMP
- Motion\_DD1012
- Motion\_DD1012\_D
- Motion\_DD1012\_N
- Motion\_DD1012AM
- Motion\_DD1012AM\_D
- Motion\_DD1012AM\_D\_N
- Motion\_DD1012AM\_N
- Motion\_DD1012PI
- Motion\_DD1012PI\_N
- Motion\_DD686\_D
- Motion\_DD686AM\_D
- Motion\_DD689
- Motion\_DD689AM
- Motion\_DDI602\_F1
- Motion\_DDI602\_F2
- Motion\_DDI602\_F3
- Motion\_DDI602AM\_F1
- Motion\_DDI602AM\_F2
- Motion\_DDI602AM\_F3
- Motion\_DDI78\_EXF1
- Motion\_DDV1016
- Motion\_DDV1016\_D

Site Navigation

- Failover Servers
- Mobile Servers
- Devices
  - Cameras
  - Microphones
  - Speakers
  - Metadata
  - Input
  - Output
- Client
  - Smart Wall
  - View Groups
  - Smart Client Profiles
  - Management Client Profiles
  - Matrix
- Rules and Events
  - Rules
  - Time Profiles
  - Notification Profiles
  - User-defined Events

Outputs

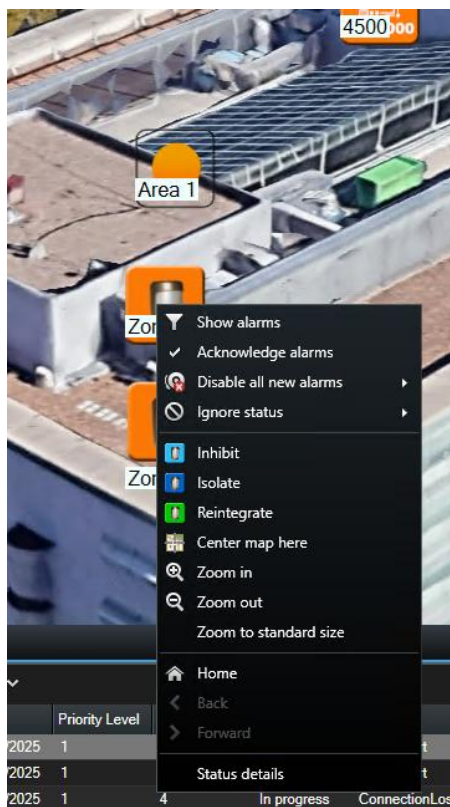
- 1500
- 4500
  - A1-Burglar Alarm
  - A1-Ready To Set
  - A1-Set
  - Ext. Siren S2
  - Int. Siren S1

Output Information

Name	A1-Set
ID	5
Type	Generic
Model	Generic_Relay

Model list:

- Generic\_Relay
- Generic\_Light
- Generic\_Door
- Generic\_Camera
- Generic\_Irrigation
- Generic\_Fan
- Generic\_Lock
- Generic\_Speaker
- Generic\_Curtain
- Generic\_Emergency
- Generic\_Intrusion
- Generic\_Biometric
- Generic\_ExtractorFan
- Generic\_Fire
- Generic\_Generator
- Generic\_Barrier
- Generic\_Bollard



**Would you like to know more?**

<https://sgse.eu/wp-content/uploads/2024/02/Aritech-Monitor-Manual-EN.pdf>